



SOBHA  
NEOPOLIS  
THE GREEK PARADISE





## CONTENTS

About SOBHA

SOBHA Neopolis

- Location & Neighbourhood

- Master Plan

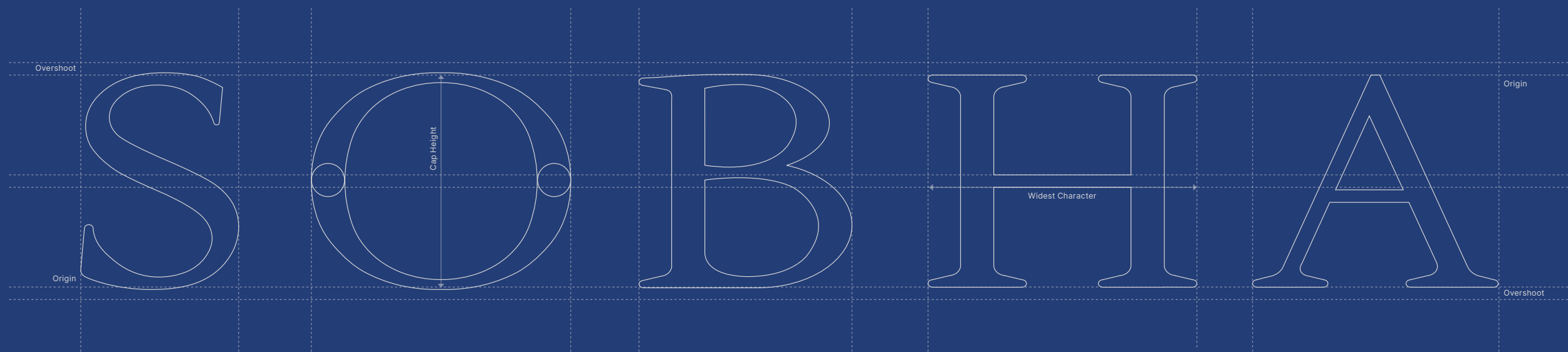
- Amenities

- Towers

- Interiors

Testimonials

Estd.  
19  
95



PASSION.  
INKED WITH PERFECTION.

SOBHA has crafted over 530 iconic projects in the residential & commercial spaces spread over 129 million sq ft, by paying minute attention to detail – in systems, processes, and design. With a steadfast approach to deliver impeccable quality, SOBHA performs 1,456 quality checks before handover.

|                                       |  |
|---------------------------------------|--|
| 28 Years of<br>Passion at Work        | Over 200<br>Prestigious Awards               |
| Strong Workforce<br>10,000+ Employees | National Footprint<br>27 Cities in 14 States |



## SOBHA'S PORTFOLIO OF EXCELLENCE



SOBHA City, Bengaluru

### Residential

SOBHA believes in setting new benchmarks in quality. From presidential apartments, villas, row houses, and luxury apartments, to plotted developments, every SOBHA product is built to last for generations.

**Delivered over 175 Projects**  
spread across 67 million sq. ft.



Infosys Global Education Center, Mysuru

### Contracting

The contracts business at SOBHA boasts of an expansive portfolio of 332 projects across India, as of 2022. Our turnkey projects include some of the global corporate giants – Taj, ITC, Bosch, Biocon, Timken, and Dell to name a few.

**Delivered 338 Projects**  
spread across 58 million sq. ft.



1 SOBHA Mall, Bengaluru

### Commercial

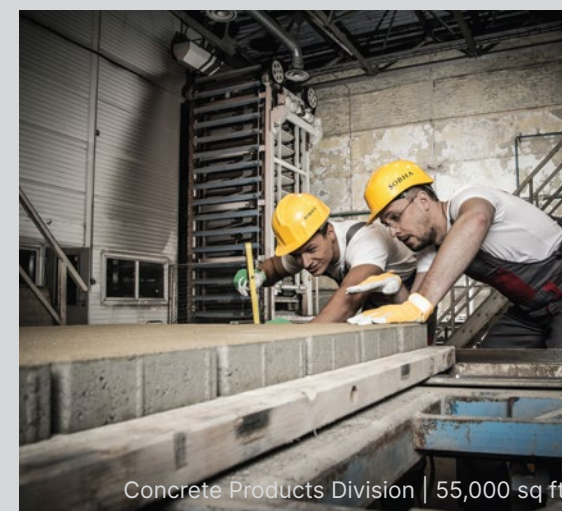
SOBHA forayed into the commercial space with SOBHA City Mall, in Thrissur. SOBHA's latest venture is 1 SOBHA Mall, an entertainment and shopping centre on St. Marks Road, Bengaluru.

**Delivered 19 Projects**  
spread across 4 million sq. ft.

## PIONEERING SELF-RELIANCE

SOBHA introduced the concept of backward integration in the real estate industry, bringing the finest together – from precision engineering to innovative design, and from superior concrete products, glazing & metal works to top-notch interiors. This philosophy allows SOBHA to provide unmatched quality to its customers.

### SOBHA's Manufacturing Verticals



Concrete Products Division | 55,000 sq ft



Interiors Division | 3,75,000 sq ft



Glazing & Metal Works Division | 1,00,000 sq ft



Precast Facility | 73,000 sq ft



## THE GREEK PARADISE

Ancient Greeks scaled many peaks in architecture that are appealing even today. Presenting SOBHA Neopolis – luxury abodes crafted with mainland Greek architectural elements such as bevelled pediments, majestic columns & arches that give it the perfect mix of classical & modern styles.

Discover magnificence like no other, with 19 towers and a multitude of amenities spread across 25+ acres. The amenities are inspired by timeless Grecian marvels, and the imposing Arrival Plaza invites you to the Greek paradise.

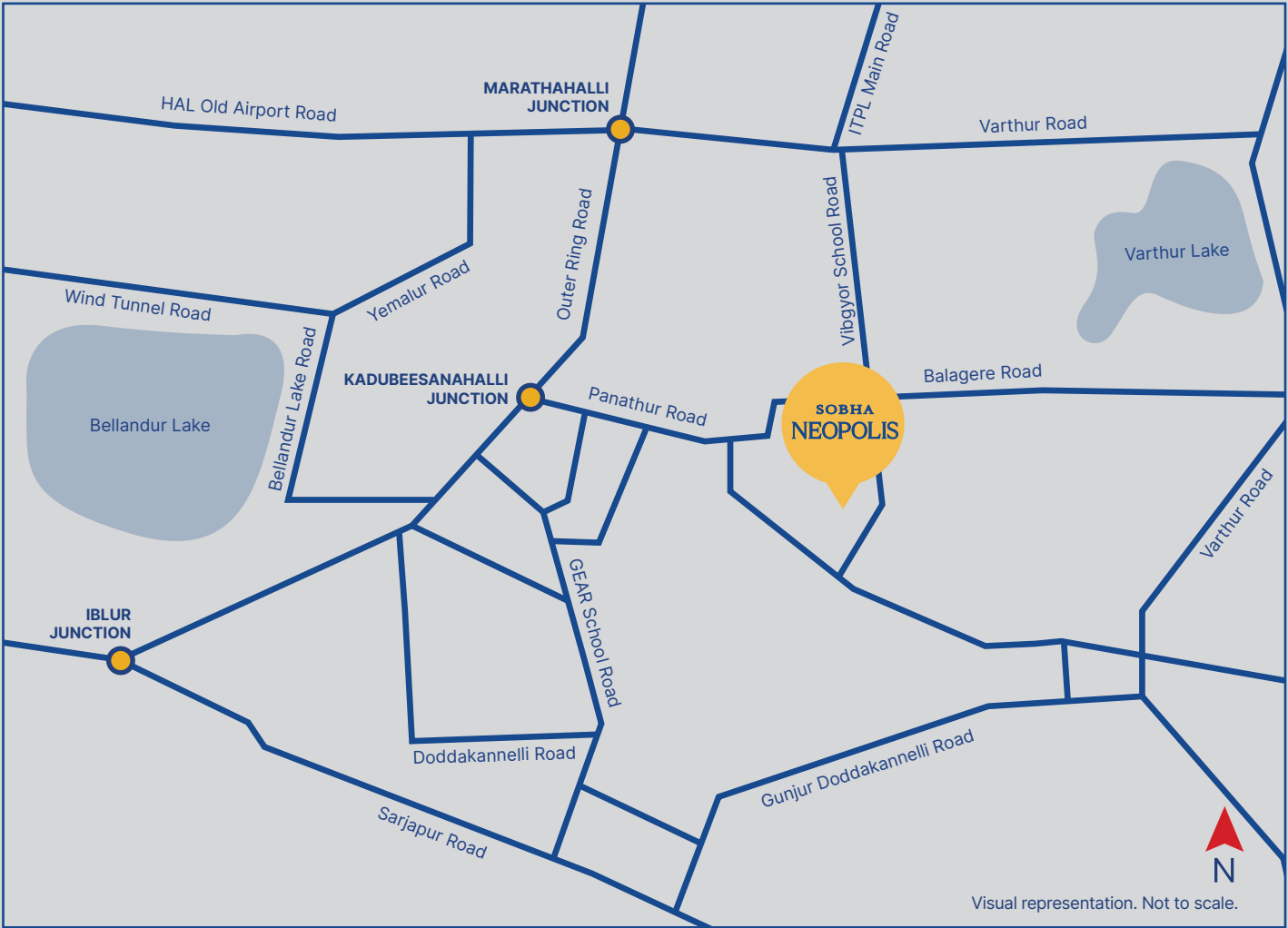
The 3 clubhouses are designed with vibrant, Santorini-inspired blue & white hues of elegance, and distinctive domes. Natural stone paving, rustic patterns, colourful & dense foliage give this sprawling community an enchanting aura. Come, enjoy a Mediterranean vacation for life.





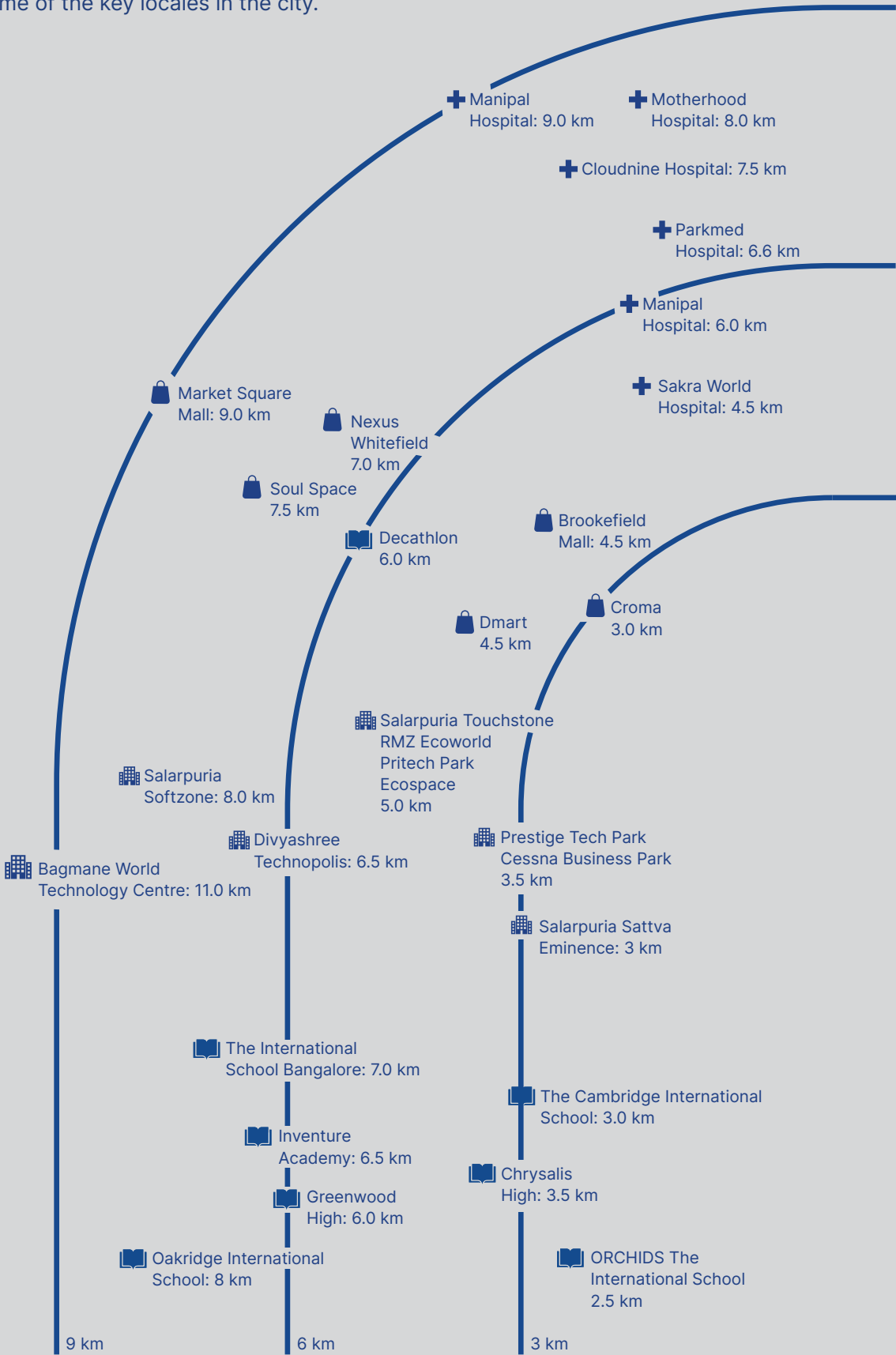
# LIVE CONNECTED

Panathur is a future-perfect location and a highly sought-after destination with unparalleled connectivity. Its proximity to the Outer Ring Road – Bengaluru's IT corridor, makes it an ideal locale for the city's workforce.



# ALL IN THE VICINITY

Life is seamless when conveniences are in the vicinity. Situated near Panathur Main Road, SOBHA Neopolis is in proximity of Bengaluru's reputed schools, hospitals, IT parks, shopping malls, and some of the key locales in the city.







## UPCOMING DEVELOPMENTS

Slated to be completed by 2025, Phases 2A and 2B of Namma Metro will connect Panathur with many workspaces, and will remarkably enhance its access to major areas of eastern, southern, central, and northern parts of Bengaluru.

- Proposed Phase 2A route: Silk Board-Kadubeesanahalli-KR Puram
- Proposed Phase 2B route: KR Puram-Hebbal-Kempegowda International Airport

The ongoing CDP (Comprehensive Development Plan) Road network will bring Panathur within short driving distance of prominent localities such as ORR, Bellandur, Marathahalli, Whitefield, and Sarjapur Road.



## MASTER PLAN

- Residential towers and the amenities are designed with key elements from timeless mainland Greek architecture
- Three grand clubhouses spread across 77,850 sq ft, modelled in vibrant Santorini island architectural style
- 78% open space with landscaping and well-distributed amenities; vehicular movement restricted to the periphery for enhanced safety
- Over 35 amenities thoughtfully curated for all age groups, and for individual & group pursuits

## AMENITIES

### RECREATIONAL ZONE

- 02 Club Athinios
- 03 Meandering Pool
- 04 Floating Deck
- 05 Eco Pond
- 07 Club Santorini
- 10 Seniors' Corner
- 20 Santorini Village
- 28 Club Syros
- 32 Bonfire Court
- 34 Meditation Pads
- 35 Bio Pond

### PARK AND PLAZA

- 01 Entrance Plaza
- 13 Fiesta Park
- 14 Portico
- 15 Amphitheatre
- 16 Olympus Plaza
- 18 BBQ & Picnic Park
- 19 Celebration Lawn

- 21 Pergola Trail
- 24 Outdoor Workspace
- 30 Cascading Waters
- 31 Foliage Cross
- 33 Moon Garden

### ACTIVE ZONE

- 11 Reflexology Walk
- 12 Basketball Court
- 17 Jogging Park
- 25 Fitness Corner
- 26 Activity Field
- 27 Grecian Trail
- 29 Leisure Pool
- 36 Tennis Court

### KIDS' ZONE

- 06 Aqua Park
- 08 Toddlers' Pad
- 09 Cycling Track
- 22 Skating Lane
- 23 Play Park

## AREA SPECIFICATIONS

| Unit Type     | SBA (sq ft) |
|---------------|-------------|
| 4 BHK         | 2333 - 2481 |
| 3 BHK + Study | 2150 - 2178 |
| 3 BHK         | 1611 - 1915 |
| 1 BHK         | 660         |

## KEY FEATURES

|                   |                      |
|-------------------|----------------------|
| Total Land Area : | 25 Acres 35.9 Guntas |
| Total Units :     | 1,875                |
| No. of Wings :    | 19                   |
| No. of Floors :   | 2B+G+18 Floors       |







Artist's Impression



Santorini Village

Artist's Impression

## A MULTITUDE OF AMENITIES

Indulge in amenities that are thoughtfully crafted for all age groups and classified into varied zones. Pursue your interests at the Recreational Zone, embrace nature and enjoy celebrations at Park & Plaza, follow a healthy & wholesome lifestyle at Active Zone, and discover safe & diverse activities at Kids' Zone.



# RECREATIONAL ZONE

The handpicked amenities at Recreational Zone enable you to pursue varied activities & interests in the company of those with similar taste. Lounge by the water bodies with a book, dine al-fresco, or spend cool evenings around bonfires.

- 3 Clubhouses
- Meandering Pool
- Floating Deck
- Eco Pond
- Seniors' Corner
- Santorini Village
- Bonfire Court
- Meditation Pads
- Bio Pond



Concept Image



# RECREATIONAL ZONE

## BE A GREEK ISLANDER

The 3 clubhouses spanning over 77,850 sq ft are modelled in vibrant Santorini architecture, with pristine water bodies recreating the island life. These opulent clubs are loaded with the finest of indoor pastimes. Celebrate and socialise over a plethora of indulgences designed for all age groups. Experience unique community living amidst like-minded people.

### CLUB SANTORINI

- Multifunctional Hall
- Salon & Spa
- Indoor Kids’ Play Area
- Coffee Shop
- Restaurant
- Mini Theatre
- Indoor Games
- Indoor Pool
- Squash Court
- Badminton Court
- Co-Working Space

- Gym
- Yoga / Meditation
- Conference Room
- Dance / Aerobics
- Hobby Room
- Swimming Pool / Lap Pool
- Kids’ Pool
- Banquet Kitchen
- Banquet Store
- Laundromat

### CLUB SYROS

- Badminton Court
- Gym
- Changing Room
- Leisure Pool

### CLUB ATHINIOS

- Banquet Hall
- Necessities Store
- Guest Rooms
- Creche
- Clinic



Artist's Impression



## RECREATIONAL ZONE



Artist's Impression

### SANTORINI VILLAGE

Vibrant, picture perfect, and with various avenues to let your hair down. The multi-level decks are equipped with dome gazebos for relaxed mornings, postcard alley for capturing candid moments, and canopy dining area for al-fresco brunches. As your little ones have a blast at the play area & activity lawn, have delicious treats at the open kiosks and explore the flea markets.



## PARK AND PLAZA

Discover amenities that will take you closer to Mother Nature. From dense foliage to cascading water, embrace the outdoors amidst amphitheatres, pathways, lawns, and gardens. Look up to the stars, celebrate festivals & gatherings, work from nature, or just take a leisurely walk.

- |                   |                   |
|-------------------|-------------------|
| Entrance Plaza    | Celebration Lawn  |
| Fiesta Park       | Pergola Trail     |
| Portico           | Outdoor Workspace |
| Amphitheatre      | Cascading Waters  |
| Olympus Plaza     | Foliage Cross     |
| BBQ & Picnic Park | Moon Garden       |



BBQ & Picnic Park



# PARK AND PLAZA

## EMBRACE GRANDEUR

The imposing Entrance Plaza will usher you into a world of Greek magnificence. Get mesmerised with scenic surroundings as you ascend the spiral staircase of the elegant clock tower. To the delight of stargazers, the zenith of the tower is equipped with a telescope.





# PARK AND PLAZA

## OLYMPUS PLAZA

Ascend the grand steps with water cascades, and discover the Olympus Plaza – imposing columns in a graceful arc inspired by the Parthenon of Acropolis. Here’s a centrally-located space to socialise with your neighbours and revel in your own paradise.



Artist's Impression



# ACTIVE ZONE

Embrace an active lifestyle. Hit the ground running or meditate amidst serene surroundings – these health & wellness activities will keep you charged through the day.



Basketball Court

- |                  |                |
|------------------|----------------|
| Reflexology Walk | Activity Field |
| Basketball Court | Grecian Trail  |
| Jogging Park     | Leisure Pool   |
| Fitness Corner   | Tennis Court   |



# KIDS' ZONE

Your Greek Paradise offers a diverse range of activities for kids of all age groups – from toddlers to teenagers. These amenities are thoughtfully located in vehicle-free areas, enhancing safety of the little ones.

- Aqua Park
- Toddlers' Pad
- Cycling Track
- Skating Lane
- Play Park

# AQUA PARK

Enjoy the sight of your *país* (noun, Ancient Greek, child) springing with joy at their exclusive water park. Let them have a gala time with their besties at the water slides & kids’ pool. Or just let the aquaphile in them indulge at the play decks and splash pool with fountain jets.



Artists Impression

Aqua Park



## NEOCLASSICAL TOWERS

At SOBHA Neopolis, 19 residential towers with double-height entrance lounges are envisioned in mainland Greek style. A treat to the discerning eye, these 18-storey high-rises feature architectural elements crafted with unparalleled finesse.



## MODERN GRECIAN ABODES

The 8 ft tall Vaastu-compliant entry ushers you into the multipurpose foyer. Vast living spaces with arched entrances and large tiles impart a lavish feel. Tall windows ensure seamless flow of natural light & air. An array of smart features – video door phone, gas leak detector, geyser control – enhances the safety of your home.



Kids' Room





Artist's Impression

Living Room

## LIVING ROOM – OPULENCE, EVERY DAY

Embrace grandeur as the well-designed living room seamlessly extends to the large dining area. Spend quality time with family & friends over sumptuous dinners. While the powder room is a thoughtful addition to this space, the alcove can be utilised to indulge in your favourite bestsellers or pursue your hobbies.

\*Powder room provided only in select apartments

Type A – 4 BHK – 1617 sq ft





# PATIO – EXTENDED JOY

The sprawling patio is your outdoor paradise. Relish breakfast with family or meditate outdoors, as you enjoy scenic views. The attached double-height private garden with pergolas can be used for organic farming. Nurture your favourite greens & herbs, and soothe your senses with fragrant blooms on the pergolas. As the sun goes down, roast up a storm with a barbecue.

\*Garden & Pergolas provided only in select apartments

Type A – 4 BHK – 1617 sq ft



Artist's Impression

Patio





Master Bedroom

## BEDROOM - HEAVENLY COMFORT

Designed aesthetically, the spacious master bedroom has an attached balcony for enhanced light & ventilation. With provision for a large walk-in wardrobe, you can gear up and step out in style, for a perfect start to the day. The kids’ room has sufficient space for study desk, creative activities, and playtime. The well-planned bedrooms are equipped with electrical and optical fibre points, making it easy to use any of them as a home office.

\*Balcony provided only in select apartments

Type A – 4 BHK – 1617 sq ft





# KITCHEN - ERGONOMICALLY CRAFTED

Elegant, spacious, and envisioned to ease your culinary journey, the open kitchen is designed to align with the dining area & balcony – so you can interact with friends & family.

The attached utility has dedicated space for sink with drainboard and dishwasher. Additionally, this area also has provision for a fully loaded laundry unit for varied utility appliances.



# BATHROOM - REFRESH & REJUVENATE

Luxurious & functional in equal measure, the bathrooms offer you a plush experience. Adorned with premium fixtures, the space is clearly demarcated with wet & dry areas. The master bathroom has shower partition, and niches in showering area for diffusers, scrubs, & other essentials. Get pampered in your private paradise.



Type A – 4 BHK – 1617 sq ft



Type A – 4 BHK – 1617 sq ft

