



EUPHORA

ETHEREAL
AMBIENCE

UNIQUE
LOCATION

PERSONAL
SPACE

HARMONY
IN NATURE

OPENNESS OF
ACTIVE LIFESTYLE

REVELRY
OF CLUB LIFE

ADVANCED
FACILITIES



DEVELOPER'S NOTE

"Blissful living" is the essence of all the dimensions of "Euphora."

Standing tall on the iconic Old Madras Road, it offers seamless connectivity to the surrounding vibrant city life to offer you unmatched conveniences and also gives you quick access to the most sought-after getaways to unwind.

Blissful homes weave tales of personal bonding in thoughtfully designed and curated personal spaces surrounded by an abundance of open and green spaces with ample lifestyle amenities for you to relax, rejuvenate, and cherish priceless moments with your loved ones.

Come be a part of Euphoric Living, where handcrafted luxury homes and vibrant lifestyle spaces unfold a new era of ethereal life.



Step into your

Euphoric
world and feel the bliss.





3 Towers

G+18 Floors

2, 3, 4 BHK

Penthouse

80% Open Space

Indulge in


**Ethereal
Luxury**

Master plan



01. MAIN ENTRANCE
02. SECURITY KIOSK
03. BUS WAITING BAY
04. DRIVEWAY
05. JOGGING TRACK
06. DROP OFF ISLAND

07. KID'S PLAY AREA
08. TOT-LOT
09. SKATING RING
10. LEISURE LAWN
11. CRICKET NET
12. BASKETBALL COURT

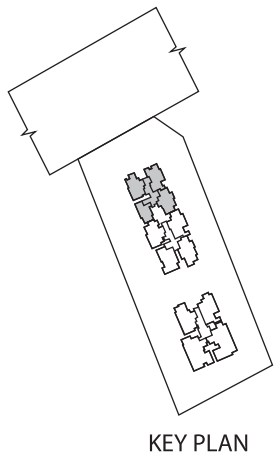
13. OPEN AIR THEATRE
14. PARTY LAWN
15. GAZEBO
16. SWIMMING POOL
17. OUTDOOR GYM
18. ELDER'S PAVILION

19. ENTRY/EXIT RAMP
20. SURFACE PARKING
21. TRANSFORMER YARD
22. D G YARD
23. OWC
24. SEATING GALLERY

25. NANNY'S CORNER
26. PLAY LAWN
27. PALM COURT
28. PARTY BARBEQUE DECK
29. POOL DECK
30. MEDITATION DECK/PODS

31. ELDER'S SEATING NICHE
32. CYCLE PARKING BAYS
33. YOGA DECK
34. YOGA LAWN
35. PET'S PARK
36. GAS BANK
37. CLUBHOUSE

TOWER-A
TYPICAL FLOOR PLAN
1ST - 18TH FLOOR



KEY PLAN

A-101-1801
3BHK
1518 Sq.Ft.



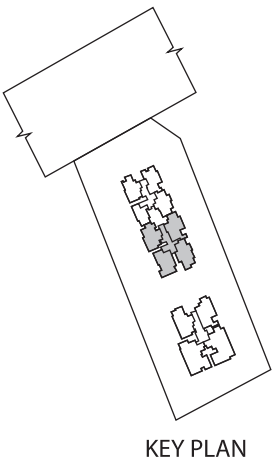
A-104-1804
2BHK
1131 Sq.Ft.

A-102-1802
3BHK
1541 Sq.Ft.

A-103-1803
3BHK
1500 Sq.Ft.

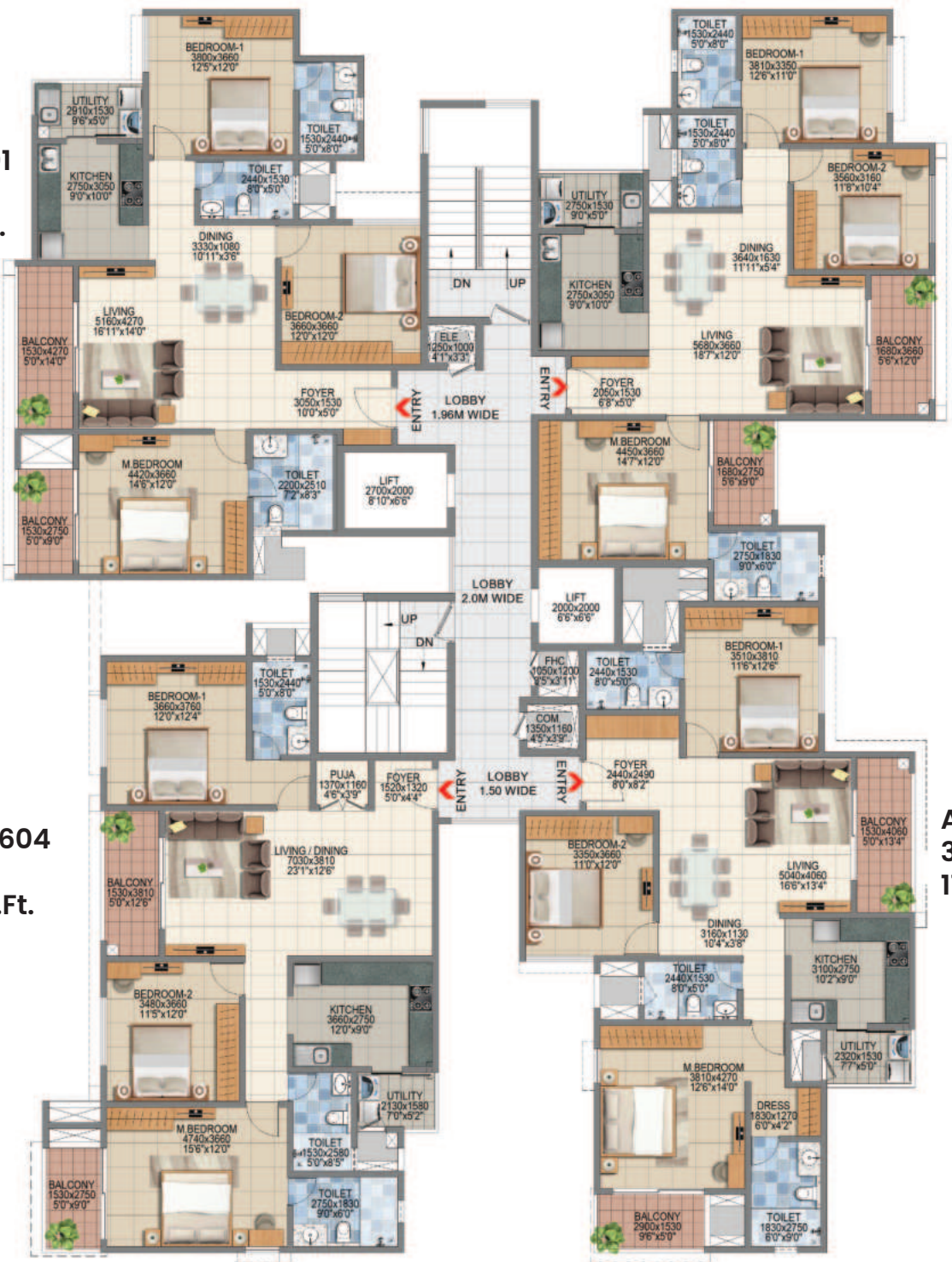


TOWER-B
TYPICAL FLOOR PLAN
1ST - 16TH FLOOR



KEY PLAN

B-101-1601
3BHK(C)
1772 Sq.Ft.



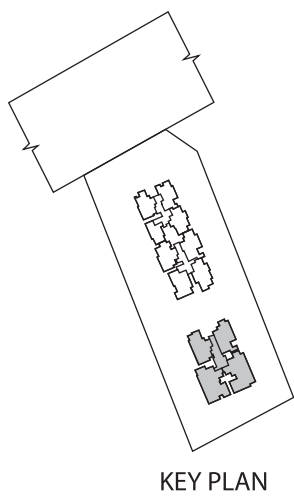
B-102-1602
3BHK(C)
1693 Sq.Ft.

A-104-1604
3BHK
1850 Sq.Ft.

A-103-1603
3BHK(C)
1777 Sq.Ft.



TOWER-C
TYPICAL FLOOR PLAN
1ST - 16TH FLOOR



C-101-1601
3BHK(L)
1927 Sq.Ft.



C-102-1602
3BHK(L)
1925 Sq.Ft.



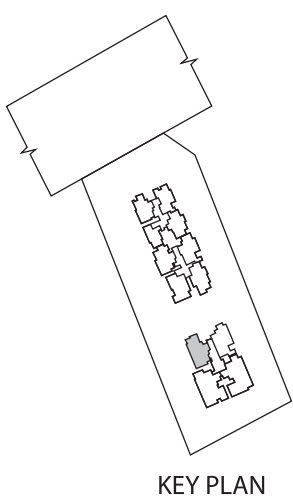
C-104-1604
4BHK
2982 Sq.Ft.



C-103-1603
4BHK
2856 Sq.Ft.



PENT HOUSE FLOOR PLAN



C-1701
PENT HOUSE
SALABLE AREA-3501.Sq.Ft



Personal Spaces

created to satiate
your desire for blissful living.

Luxury doesn't shout; it whispers.
It doesn't impose, nor can it be forced.
Here, luxury has flowed in grace,
in its own harmonious comfort,
and echoes all throughout your personal space.





Your Outdoor Oasis,
Where Recreation Meets Relaxation.



Unwind in Style: Luxurious Amenities Designed for Pure Bliss. Each of these amenities is designed to provide a sanctuary of relaxation, comfort, and indulgence, ensuring a memorable and blissful experience.





Harmony

of being one with nature

As you lay your eyes upon verdant greens,
it soothes your soul and fills you with bliss.
An essence that smells familiar to childhood.
An air of purity lingers; it feels and breathes fresh.



The bliss of high-spirited adventures
is found at the kid's play area.

Revelry

that makes your grandest
celebrations blissful

Rejoice in the unending aura of Euphoria,
where celebrations are never-ending,
and every moment is spent in bliss.
You've known it exists, and now you can feel it
every time you indulge amid the club facilities.





Specification

STRUCTURE

- Seismic Zone II RCC wall structure using pre engineered Aluminum formwork

APARTMENT FLOORING & DADOING

- Premium Quality Vitrified Tiles flooring in Foyer, Living, Dining, Kitchen and Bedrooms
- Laminated Flooring in Master Bedrooms
- Premium Quality Antiskid tile flooring in Utility / Toilets / Balcony
- Premium Quality Glazed Tiles dado in all toilets

DOORS & WINDOWS

- Premium quality Laminated Door with Premium digital lock for Main Door
- Premium quality Mulded / Laminated Door with Premium quality hardware for Bedroom and Toilets
- Premium Quality UPVC / Aluminum sliding door with mosquito Mesh shutter for Balcony
- Premium Quality UPVC / Aluminum Window with mosquito Mesh
- Aluminum frame with glass blinds for Ventilators in Toilets

TOILETS

- Premium quality Chrome Plated fittings
- Premium quality Wall mounted EWC's with concealed tank & Wash Basin
- Provision for Exhaust fan & Geyser

BALCONY

- Premium quality Glass railing with SS Handrail for Balcony

PAINTING

- Premium quality Acrylic Emulsion Paint for internal walls & Ceiling
- Premium quality Exterior Emulsion Paint for External walls
- Premium quality Synthetic Enamel paint for metal surface

ELECTRICAL

- Premium quality Concealed Copper wiring with Circuit breakers
- Premium quality Modular Switches
- Conducting Provision for Air Conditioning

STAIRCASE & LOBBY

- Premium quality vitrified flooring for Lobby
- Granite/ Step tile for Staircase
- MS Handrail for staircase
- High Speed Premium Elevators of suitable size and capacity

COMMON AMENITIES

- CCTV at major entry and Exit points
- Generator will be provided for common areas
- Piped gas line system to each flat from Gas bank
- Fire fighting works as per safety norms
- STP, WTP, UG SUMP & OHT will be provided as per norms of required capacity
- Signage's for all common Amenities Luxury Designer Entrance Lobby.
- Fully Functional Lifestyle Club



Major landmarks in and around your vicinity

HEALTH CARE

Sathya Sai Orthopaedic & Multi speciality Hospital	500 mts
Sathya Sai Multispeciality	03 kms
Vydehi Hospital	12 kms

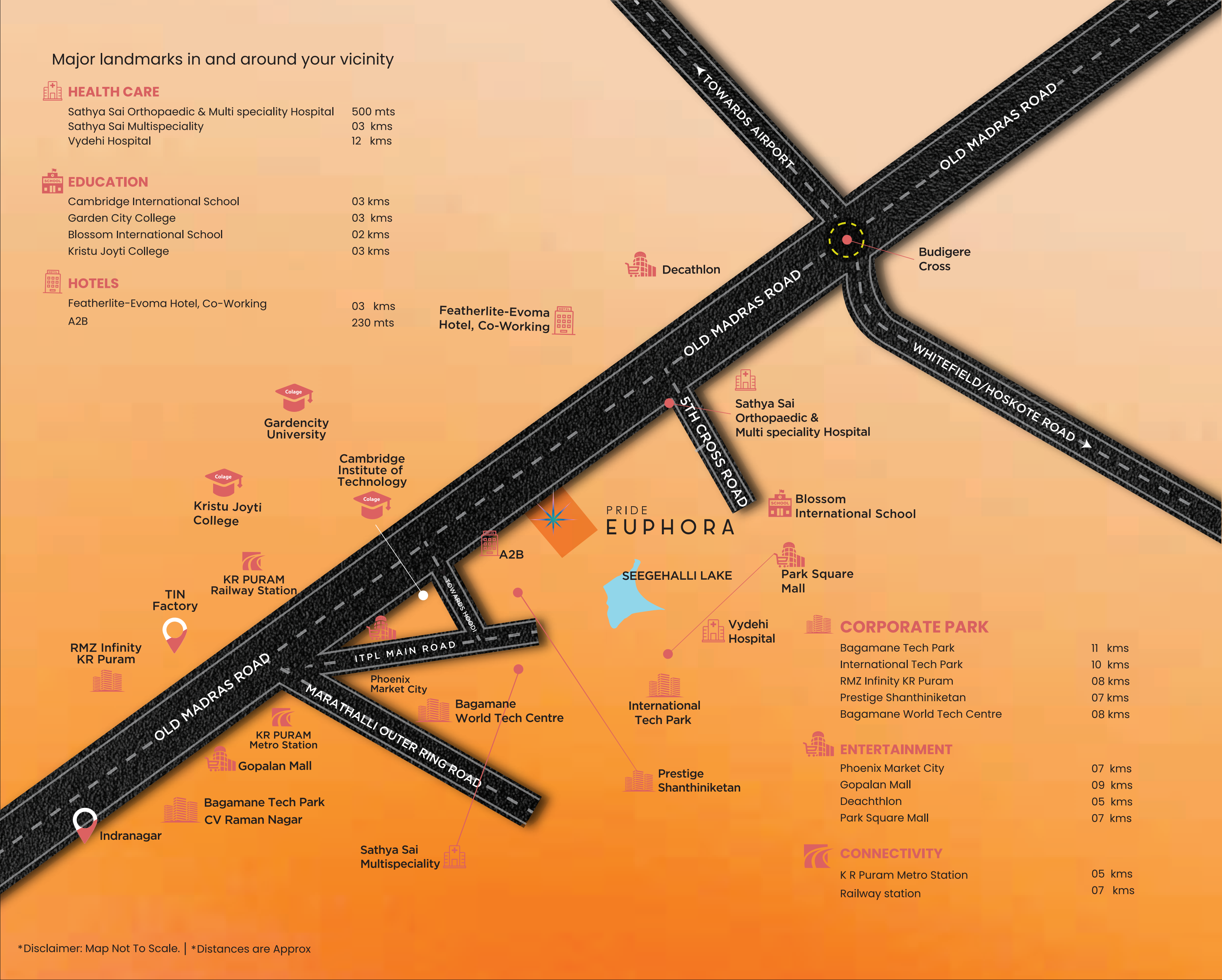
EDUCATION

Cambridge International School	03 kms
Garden City College	03 kms
Blossom International School	02 kms
Kristu Joyti College	03 kms

HOTELS

Featherlite-Evoma Hotel, Co-Working A2B	03 kms 230 mts
---	-------------------

Featherlite-Evoma Hotel, Co-Working



CORPORATE PARK

Bagamane Tech Park	11 kms
International Tech Park	10 kms
RMZ Infinity KR Puram	08 kms
Prestige Shanthiniketan	07 kms
Bagamane World Tech Centre	08 kms

ENTERTAINMENT

Phoenix Market City	07 kms
Gopalan Mall	09 kms
Deachthlon	05 kms
Park Square Mall	07 kms

CONNECTIVITY

K R Puram Metro Station	05 kms
Railway station	07 kms

*Disclaimer: Map Not To Scale. | *Distances are Approx