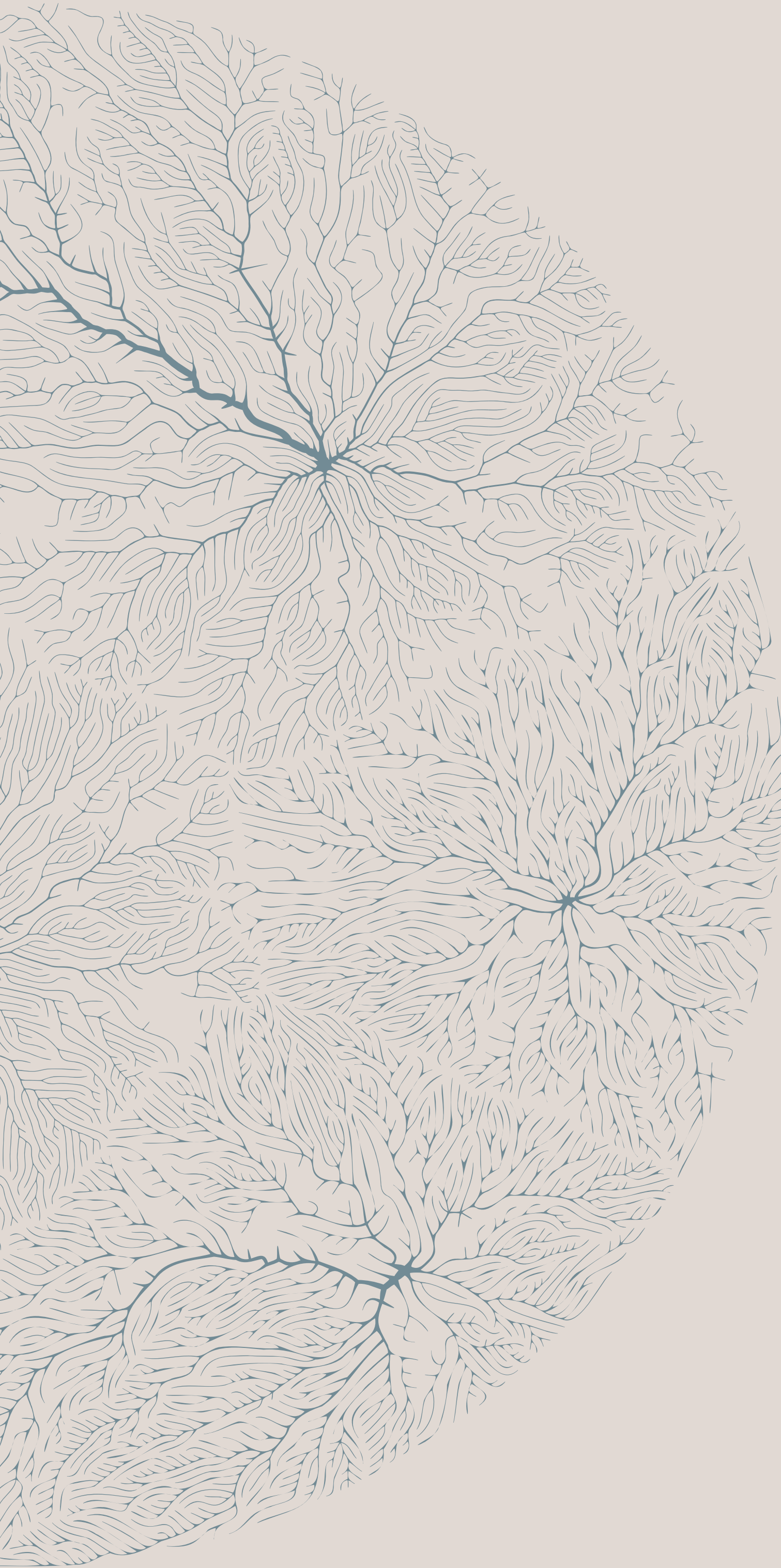




bricks
& milestones



The
earthscape

📍 Whitefield – Sarjapur Road

PRM/KA/RERA/1251/446/PR/020925/008044

INTRODUCING

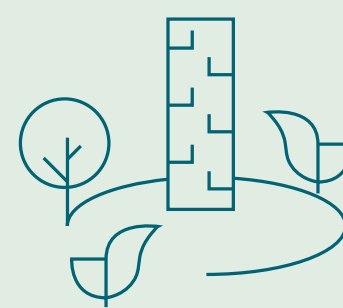


WHERE LIFE BREATHES FREE, GROWS DEEP & FEELS TRUE.

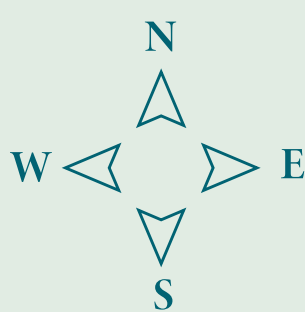
At The Earthscape, less truly means more. Fewer homes mean more space to breathe. More openness brings a deeper sense of calm. And this mindfulness creates a harmony you can feel. Welcome to a home that feels like an independent villa in the sky - where nature beckons, trees whisper, and luxuries surround you.



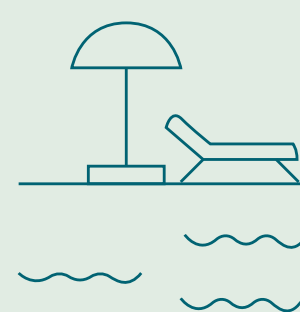
Spanning 22.3 verdant acres



Low-density lifestyle



Vastu-compliant homes

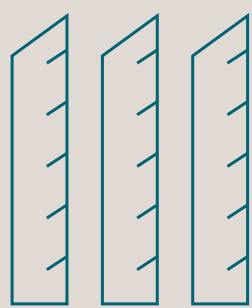


Thoughtful amenities

LIFE, RAREFIED

The luxury of time, of space, of silence.

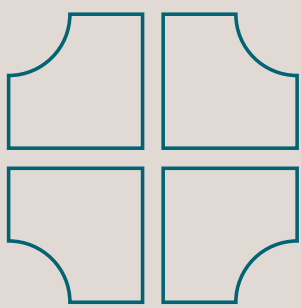
Natural light that pours in from both sides. A breeze that travels unbothered through your rooms. A courtyard that doubles up as your personal patch of sky. At The Earthscape, every home is a corner unit. No main doors facing each other. No peeking balconies. Just generous double-height balconies, spacious courtyards, and deeply intentional layouts. The result? A space that feels expansive, private, and profoundly personal.



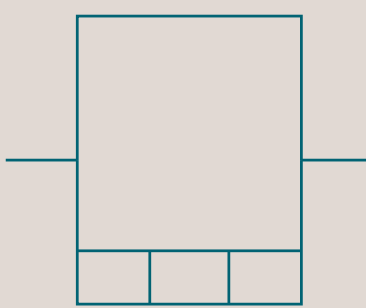
1258 apartments



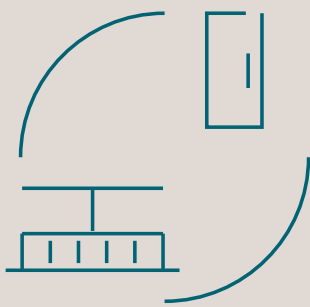
4 homes per floor



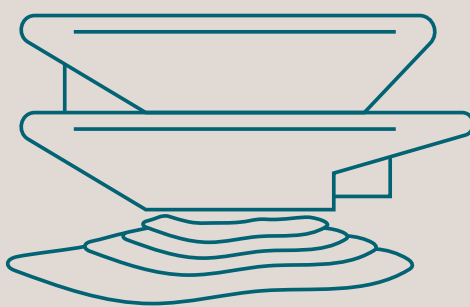
All corner units



Double-height balconies



Unparalleled privacy



Club Amara

MASTER PLAN

Designed to be explored. Not just lived in.



FEATURES

- 0 1. Entry/exit arch with security cabin
- 02. Driveway
- 03. Pedestrian pathway
- 1 0. Fire driveway
- 50. Visitor parking

LANDSCAPE AMENITIES

- 04. Arrival plaza with sculpture court
- 05. Bus bay with seating
- 06. Event space/pop up market space
- 07. Urban farm
- 08. Pet park
- 09. Cycling/jogging track
- 1 1. Mini golf
- 12. Bicycle parking
- 13. Co-working pavilion
- 14. Informal seating
- 15. Community hub
- 16. Children's play area
- 17. Outdoor gym
- 18. Activity lawn
- 19. Basketball court
- 20. Tennis court

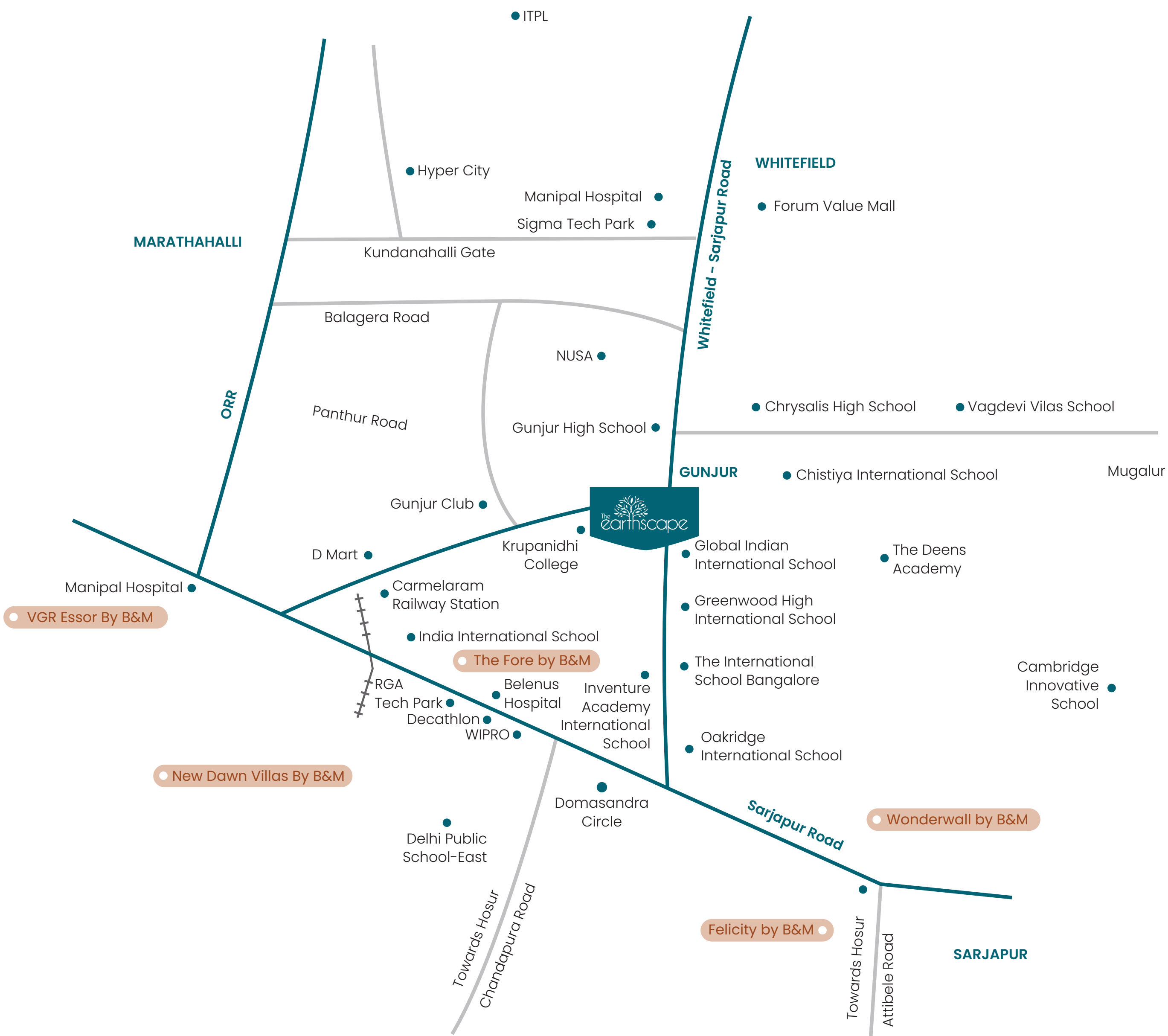
- 2 1. Multi-purpose sand court
 - Beach volley ball
 - Kho-kho
 - Kabadi
- 22. Mini soccer court
- 23. Meandering path with canopy seating
- 24 Green heaven garden
- 25. Reflexology path
- 26. Leisure park
- 27. Water body with pod's
- 28. Camp fire zone
- 29. Tree deck
- 30. Elevated deck
- 3 1. Thematic garden
- 32. Relaxation hub with seating
- 33. Pond retreat
- 34. Skate park
- 35. Community courtyard with seating
- 36. Circular structure with seating
- 37. Party lawn
- 38. Kid's pool-shallow pool
- 39. Lazy pool with island planting
- 40. Canopy courtyard
- 4 1. Main pool
- 42. Event lawn
- 43. Social plaza seating with water pond
- 44. Stepped seating

- 45. Pickle ball court
- 46. Box cricket
- 47. Hammock garden
- 48. The oculus foyer
- 49. Yoga lawn

CLUBHOUSE AMENITIES

- Badminton courts
- Squash court
- Billiards room
- Table tennis
- Indoor games
- Cards room
- Games arcade
- Indoor swimming pool
- Space for convenience store
- Space for horticulture
- Banquet halls
- Gym
- Activity room
- Space for salon
- Space for spa
- AV room
- Co-working space
- Yoga/activity deck
- Association office

A RARE LOCATION, CAREFULLY CHOSEN





Education

Chrysalis High School

Basil Woods International School

Greenwood High International School

Global Indian International School

Inventure Academy

TISB

United World Academy

DPS East

Krupanidhi college

all within 5–15 mins



Healthcare

Manipal Hospital (Varthur)

Sakra World Hospital

Manipal Hospital (ORR)

Kauvery Hospital Marathahalli

Belenus Champions Hospital

Clouldnine Hospital

Rainbow Children’s Hospital

all within 10–20 mins

S

Shopping

High Street at Gunjur – 200 meters from project

Nexus Whitefield

Virginia Mall

Soul Space Spirit Centro Mall

Decathlon, Sarjapur Road

Upcoming Mall at Prestige Smart City

Upcoming Mall opp. The Fore

Multiplexes:

Nexus Whitefield | Centro Bellandur

Phoenix Market City | Nexus Shantiniketan

all within 10–25 mins

V

Workspaces

RGA Tech Park | RMZ Ecospace

Prestige Ferns Galaxy

Global Technology Park

Pritech Park SEZ | RMZ Eco World

Embassy Tech Village

Bagmane Constellation Business Park

ITPL | Wipro

Microsoft | Flipkart Corporate Office

Wells Fargo | Goldman Sachs

JP Morgan Chase

The Fore

all within 10–25 mins

THE MOTHER EARTH SPACE

A story rooted in earth

The soul of The Earthscape is open, with only 10% of the land being used for your apartments and a generous portion of it dedicated to our Mother Earth Space - expansive green pockets preserved and nurtured, devoted to trees, soil, and silence, rather than cars, concrete, or commerce. Here, native species thrive, birds return, and serenity prevails. Not landscaped. Earthscaped.



A COMMUNITY THAT CONNECTS

Imagine this. You’ve bought the most beautiful home. But you want to spend your time outside. Why? Because The Earthscape isn’t just built for families. It’s built for friendships. With shaded seating pods, conversation zones, and a celebration lawn, every space invites you to linger, talk, laugh, or simply be. This is where neighbours become your tribe.



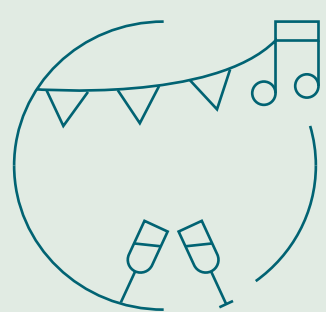
Pop-up flea market zone on weekends



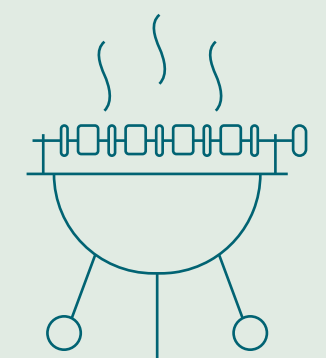
Leisure gardens



Amphitheatre



Celebration zone for festivals



Picnic lawn and BBQ area

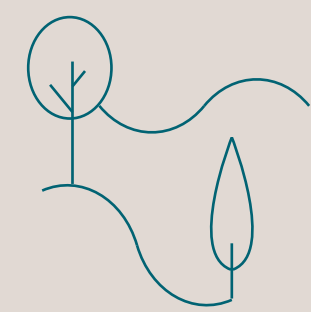


Party Lawn
Artist's impression

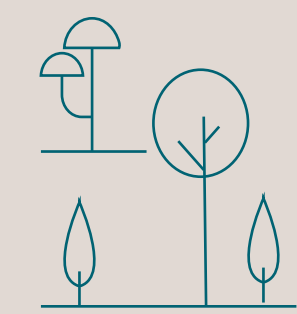
A LANDSCAPE WITH PURPOSE

Where the outdoors is more than just a backdrop

The Earthscape isn't just green. It's thoughtful.
Every inch is designed for restoration, recreation and reflection.



Multi-use trails for jogging,
walking & cycling



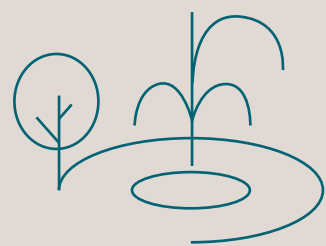
Hammock garden,
tree deck, shaded pavilions



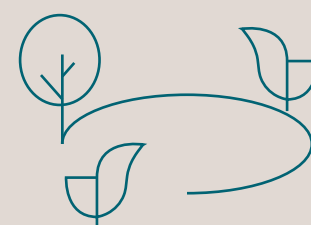
Co-working lounges and
shaded social plazas



Nature zones with
canopy seating



Bio-pond



Waterbody with
seating pods



Water Body with Pods

Artist's impression

WELLNESS AT THE CORE

Healthier habits. Happier lives.

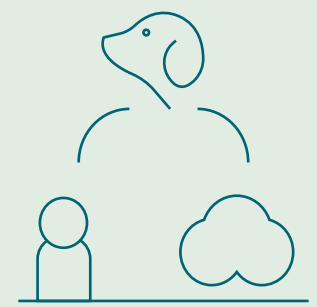
Here, wellness isn't a checklist. It's in the morning jog that begins under a green canopy. The nature trails your grandmother loves. The yoga lawn, the pet park, and the silence of the meditation garden. Because good health doesn't come only from a gym. It comes from how you live.



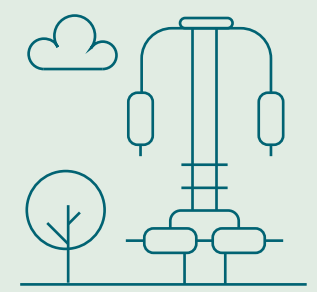
Nature trail for
effortless movement



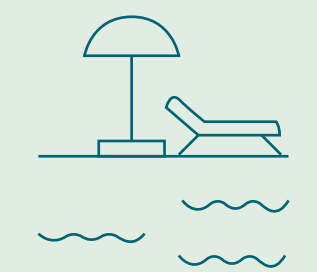
Yoga lawns and
meditation deck



Pet park



Outdoor gym
& calisthenics zone



Outdoor swimming pool



Elevated Deck

Artist's impression

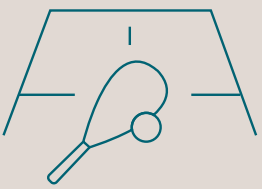
PLAY, REIMAGINED BENEATH OPEN SKIES.

The great outdoors, designed for every age.

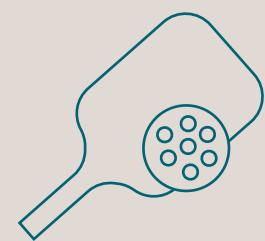
At The Earthscape, play isn't an afterthought. It's the heartbeat of the outdoors. From a tree deck for little explorers to a hammock garden for laidback dreamers, we've created spaces that invite imagination, laughter, and movement. Multi-purpose sand court, children's play area, skate park and shaded activity zones ensure there's something for everyone, every day.



Basketball



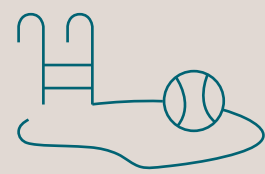
Tennis



Pickleball



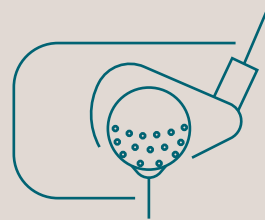
Beach volleyball



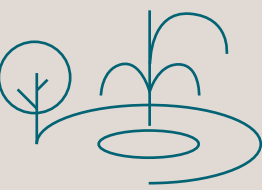
Dedicated kids' pool



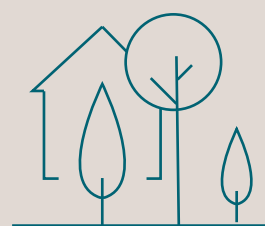
Skate park



Mini golf & box cricket



Children's park



Tree deck



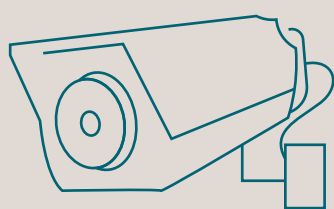
Skate Park

Artist's impression

SECURITY & SUSTAINABILITY

Peace of mind comes built-in

From illuminated walkways to intuitive security systems, peace of mind follows you home. And beneath it all, a conscious design ethos beats strong - conserving water, easing the heat, and creating a thriving haven for native flora and fauna. This is a home that looks after you and the earth it rises from.



CCTV coverage



Well-lit walkways



Sustainable materials & construction methods



Rainwater harvesting & native planting for groundwater recharge



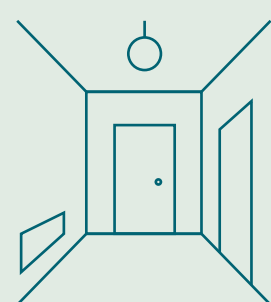
Pond Retreat

Artist's impression

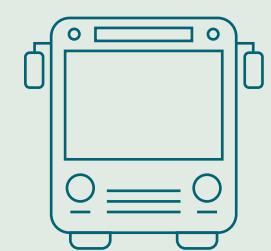
THOUGHTFUL CONVENIENCES

The smallest touches make the deepest impact.

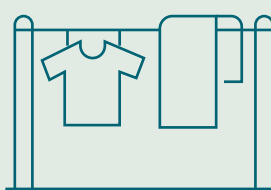
At The Earthscape, comfort is planned into your everyday, with each thoughtful feature fitting seamlessly into your daily routine.



Pre-foyer space
for each flat



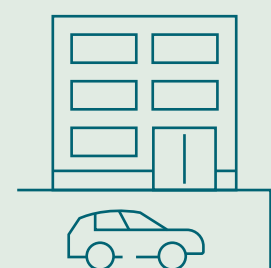
School bus zone
designed for safety



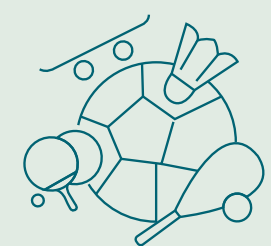
Dedicated drying area
in every home



Flexible kitchen
utility space



Basement parking to keep
ground level vehicle-free

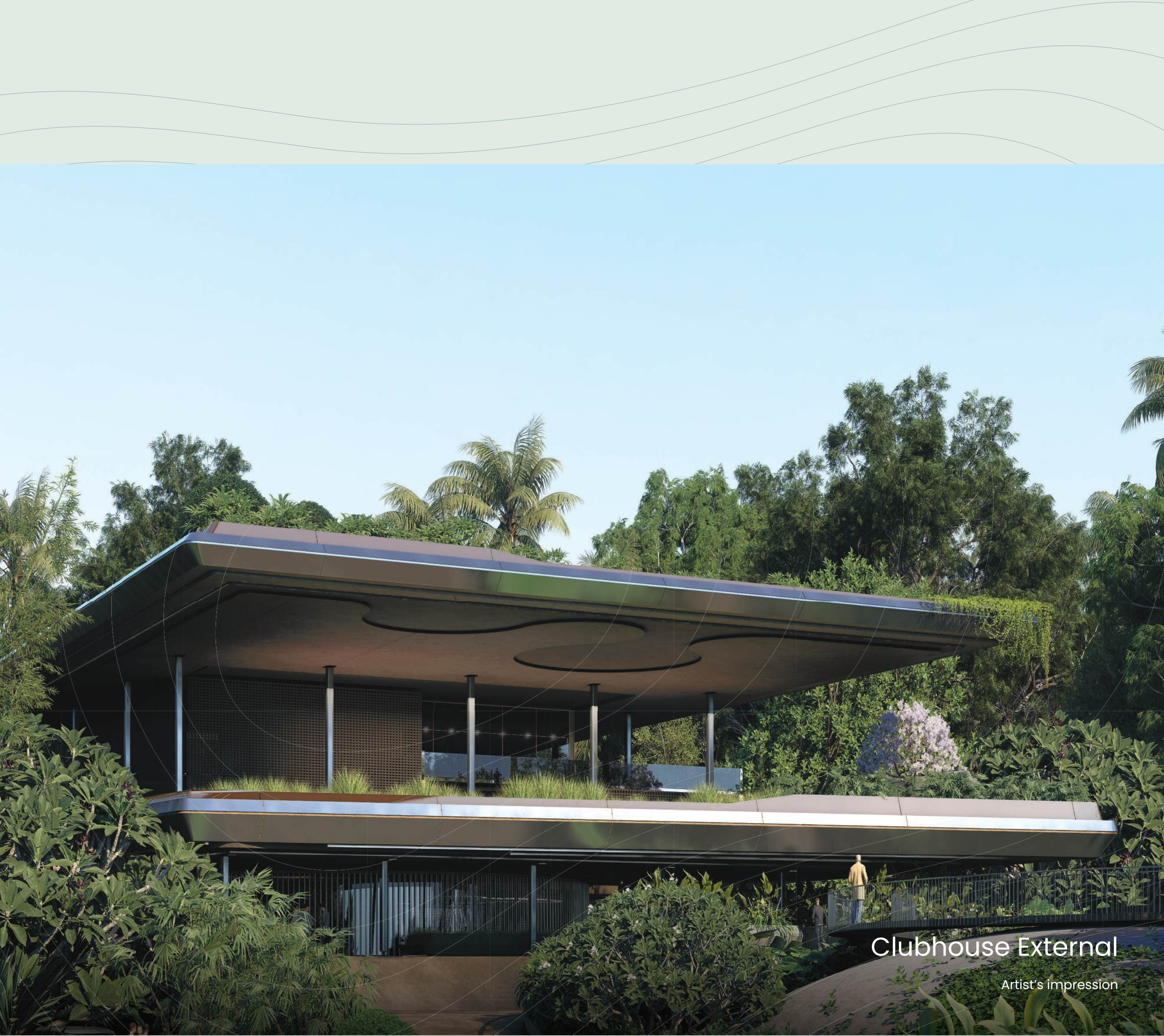


Multi-use sports arena
placed away from
residential towers



Bus Bay with Seating

Artist's impression

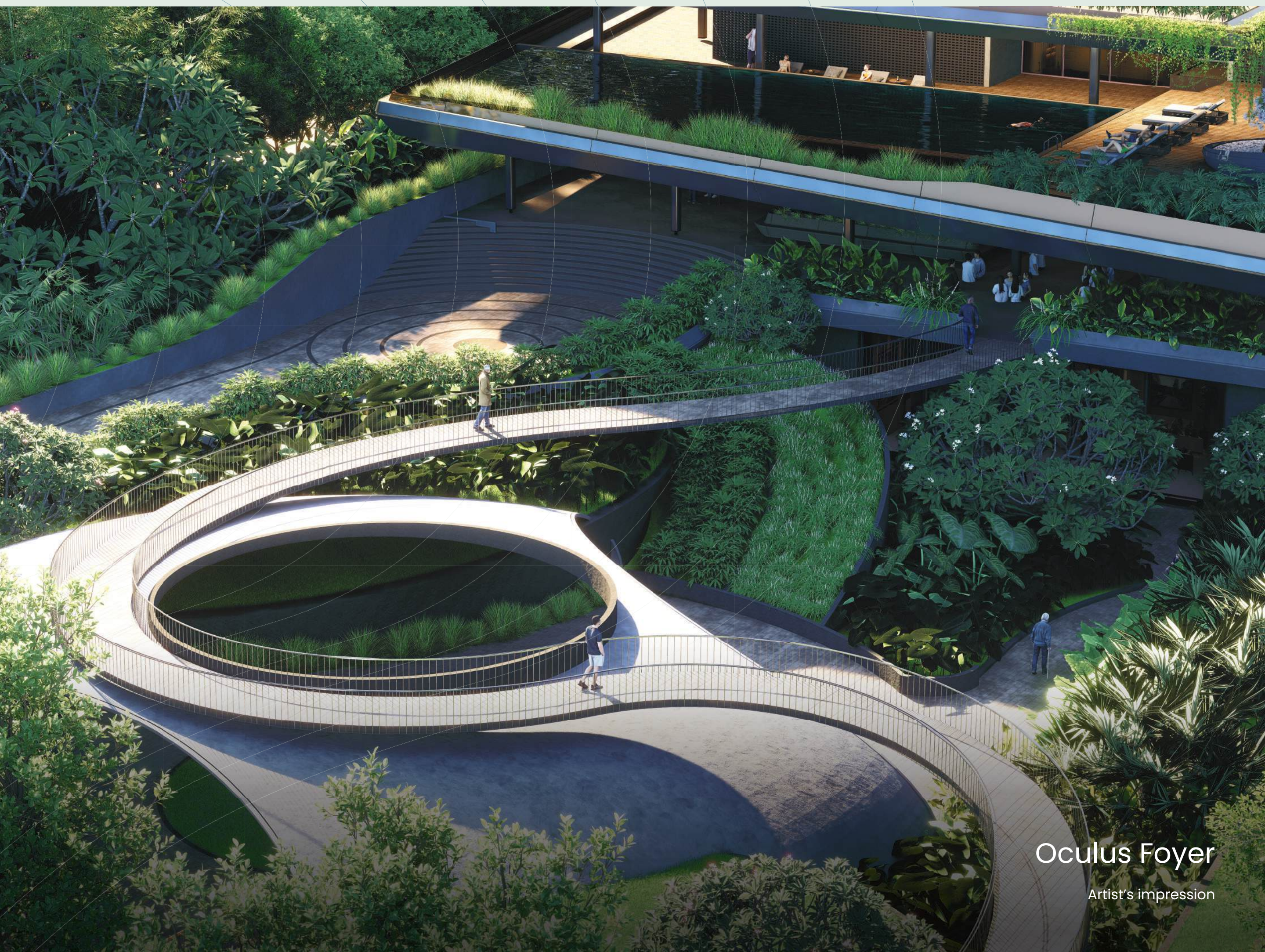


Clubhouse External

Artist's Impression

CLUB AMARA





Oculus Foyer

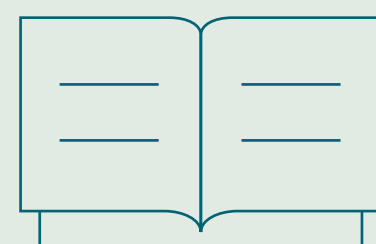
Artist's impression

A LIFESTYLE, RAREFIED

Step into The Earthscape's clubhouse – a sanctuary where wellness, work, and leisure blend effortlessly. Start your day with sunrise yoga on the open-air deck, find your creative spark in the co-working zones, rally friends for a game of badminton or squash (or just head to the games arcade for a playful break), get lost in a book in the quiet reading corners, cool off in the temperature – controlled pool, stroll through lush gardens, or simply stock up on essentials at the on-site convenience store. Welcome to Club Amara.



Indoor games & lounges



Reading corners



Spa



Indoor gym

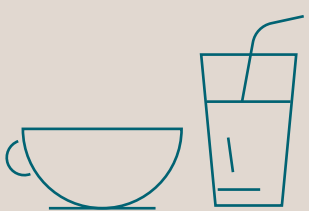
INDULGENCE, MINDFULLY DONE

Luxury doesn't have to be loud.

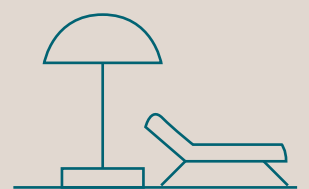
The quiet joy of a coffee in a shaded pod. An evening drink on a rooftop lounge. A meal cooked by a chef, not for a crowd, but for a moment. Every luxurious experience is designed to elevate your sense of being, not just your lifestyle.



Chef's kitchen for private gatherings



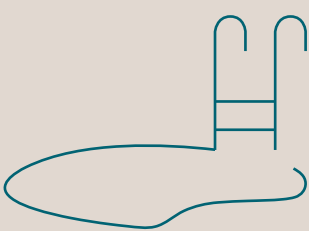
Café



Relaxation hubs with canopies



Rooftop lounge



Temp controlled swimming pool



Temp-Controlled Pool

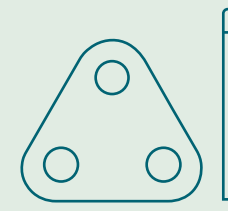
Artist's impression



Badminton
courts



Squash court



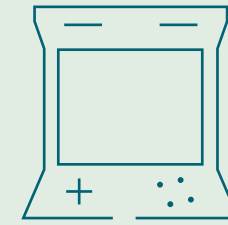
Billiards room



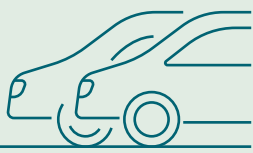
Table tennis



Cards room



Games arcade



Guest car
parking



Space for
convenience
store



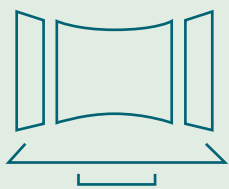
Space for
horticulture
store



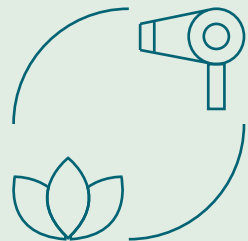
Crèche



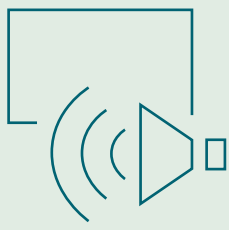
Banquet hall



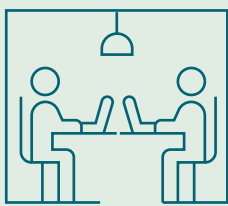
Activity room



Space for
salon



AV room



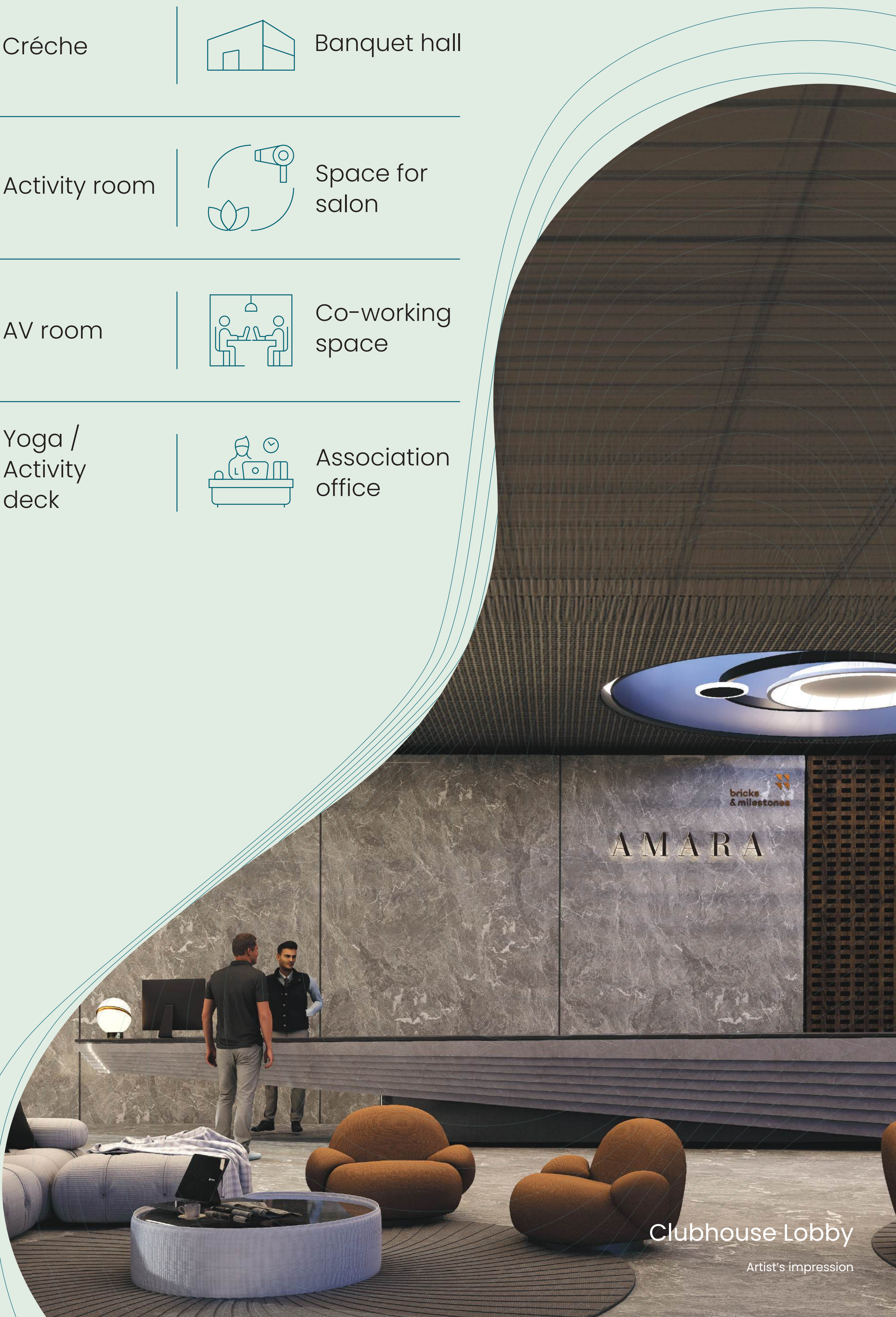
Co-working
space



Yoga /
Activity
deck



Association
office



Clubhouse Lobby

Artist's impression

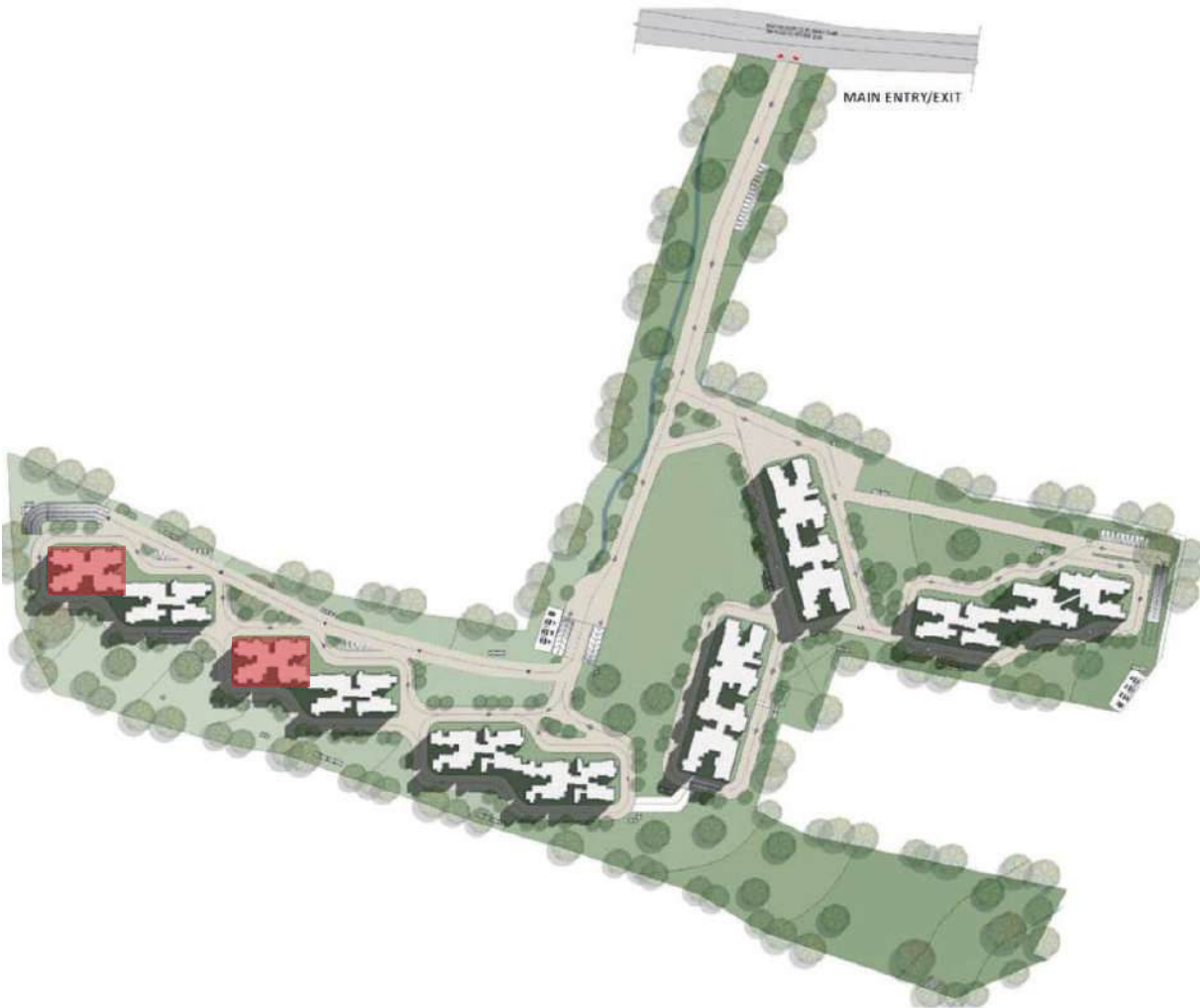
WING A & C

TYPICAL FLOOR TOWER PLAN - 3 BHK UNITS



UNIT 03

UNIT 02



MASTER KEY PLAN

TYPICAL FLOOR

UNIT NUMBERS	TPOLOGY	RERA CARPET AREA	BALCONY AREA	SUPER BUILT-UP AREA
Unit 0301 to 1801, 2001 to 2601	3 BHK	1139	173	1874
Unit 0302 to 1802, 2002 to 2602	3 BHK	1118	177	1844
Unit 0303 to 1803, 2003 to 2603	3 BHK	1126	174	1854
Unit 0304 to 1804, 2004 to 2604	3 BHK	1155	170	1884



WING B & D

TYPICAL EVEN FLOOR PLAN – 3 BHK PLUS UNITS



MASTER KEY PLAN

TYPICAL EVEN FLOORS

UNIT NUMBERS	TPOLOGY	RERA CARPET AREA	BALCONY AREA	SUPER BUILT-UP AREA
0401, 0601, 0801, 1001, 1201, 1401, 1601, 1801, 2001, 2201, 2401, 2601.	3 BHK PLUS	1273	174	2090
0402, 0602, 0802, 1002, 1202, 1402, 1602, 1802, 2002, 2202, 2402, 2602.	3 BHK PLUS	1244	176	2052
0403, 0603, 0803, 1003, 1203, 1403, 1603, 1803, 2003, 2203, 2403, 2603.	3 BHK PLUS	1241	178	2044
0404, 0604, 0804, 1004, 1204, 1404, 1604, 1804, 2004, 2204, 2404, 2604.	3 BHK PLUS	1267	166	2084



WING E & F

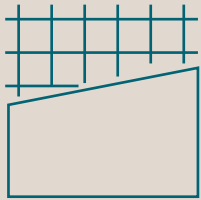
TYPICAL EVEN FLOOR PLAN - 3.5 BHK UNITS



MASTER KEY PLAN

TYPICAL EVEN FLOORS

UNIT NUMBERS	TPOLOGY	RERA CARPET AREA	BALCONY AREA	SUPER BUILT-UP AREA
0401, 0601, 0801, 1001, 1201, 1401, 1601, 1801, 2001, 2201, 2401, 2601.	3.5 BHK	1372	176	2228
0402, 0602, 0802, 1002, 1202, 1402, 1602, 1802, 2002, 2202, 2402, 2602.	3.5 BHK	1338	180	2197
0403, 0603, 0803, 1003, 1203, 1403, 1603, 1803, 2003, 2203, 2403, 2603.	3.5 BHK	1380	179	2242
0404, 0604, 0804, 1004, 1204, 1404, 1604, 1804, 2004, 2204, 2404, 2604.	3.5 BHK	1399	173	2278



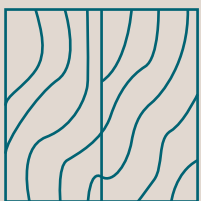
Structure

- Structural System: Monolithic shear wall structure designed for seismic compliance



Lobby

- Elegant ground floor lobby with flooring & cladding in granite / vitrified tiles
- Combination of vitrified tiles / granite for flooring & cladding for upper floor lobbies



Flooring

- Pre-Foyer, foyer, living, dining, kitchen, & utility:
Large vitrified premium quality tile flooring
- Master bedroom:
Premium wooden texture tile flooring
- Other bedrooms:
Vitrified tile flooring



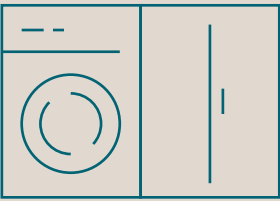
Toilets

- Floor & dado: Vitrified tile
- Granite counters with a ceramic wash basin
- EWCs: TOTO / American Standard, or an equivalent brand
- CP fixtures: TOTO / Hansgrohe or an equivalent brand
- Single lever tap & shower
- Provision for a geyser point in all toilets
- Grid false ceiling



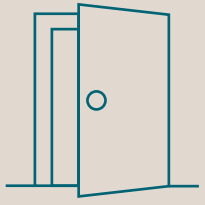
Kitchen & Utility

- Kitchen dado tile and counter will not be provided
- Provision for water supply and drain out for sink, dishwasher, and water purifier



Drying Balcony

- Water supply and drain out provision for a washing machine



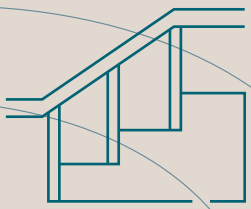
Main Door & Bedroom Door

- Hardwood frame / Engineered wood frame, veneered flush shutter and PU polish on both sides
- Digital lock for main door



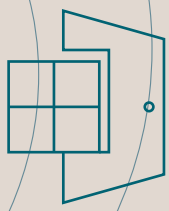
Toilet Door

- Hardwood frame / Engineered wood frame, veneered flush shutters with PU polish on one side and laminated finish on the other side



Utility, Balcony & Common Area Staircase

- MS railing



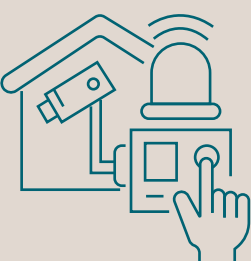
External Doors & Windows

- UPVC/Aluminium framed sliding shutters for balcony
- UPVC/Aluminium framed windows with mosquito mesh shutters



Electrical

- Switches & sockets: Legrand / Schneider, or an equivalent brand
- Sufficient power outlets & lighting points provided in all rooms
- Wires: Havells / Polycab / KEI, or an equivalent brand
- TV point provision: Living & master bedroom
- Data point provision: Living & master bedroom
- Split AC point: Living & all bedrooms
- Exhaust fan point: All bathrooms
- Geyser point: All bathrooms



Security System

- Security cabinets at all entrances & exits with CCTV coverage



DG Power

- 100% power backup with diversity factor

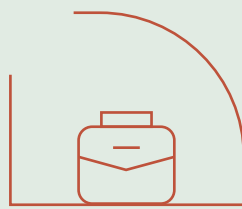


bricks & milestones

10 years of crafting spaces with distinction



Residential



Commercial



Hospitality

Founded in 2015 by visionary architect Kiran V, Bricks and Milestones has set new benchmarks in luxury, sustainability and thoughtful design. Guided by the philosophy of "creating masterpieces," Bricks and Milestones seamlessly blends cutting-edge architecture with eco-conscious living. Every project is a testament to innovation, elegance and meticulous craftsmanship, delivering exclusive, low-density communities designed for those who seek more. From handpicking the finest locations to collaborating with world-class designers, Bricks and Milestones ensures that every home is a legacy in the making. With a commitment to excellence and sustainability, we continue to shape the future of premium living.

WE DON'T BUILD HOMES. WE BUILD BEAUTIFUL.

UPCOMING MARVELS

HENNUR

750 premium apartments
in 9.5 acres

SARJAPUR ROAD

Plotted development in
40 acres (Phase 1)

NANDI HILLS

Villa project in
30 acres (Phase 1)

SARJAPUR ROAD

Township with apartments,
retail, hospital in 90 acres

PAST MILESTONES

RESIDENTIAL MASTERPIECES

New Dawn | Wonderwall | Felicity | Lagos

COMMERCIAL ICONS

The Fore | VGR Essor | Iris