



SOBHA
CRYSTAL MEADOWS

EXCLUSIVITY BECKONS.



HERE'S
TO YOUR
VISION OF
ACHIEVING
**ONLY THE
FINEST.**

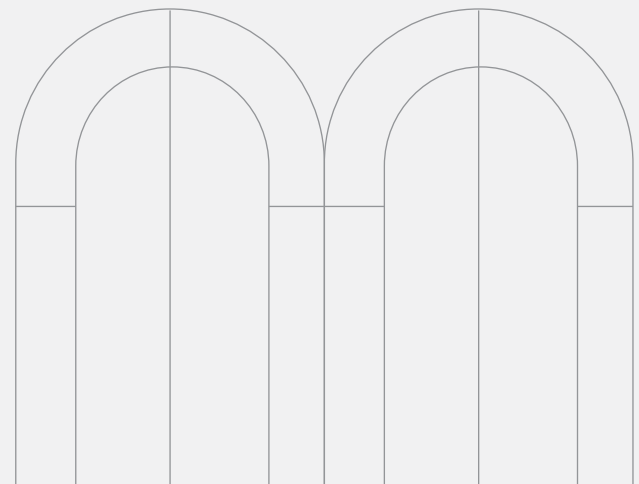
In the realm of refined taste, where exclusivity reigns supreme,
there strides a rare soul, whose ambition does boldly gleam.
With eyes ablaze, a fierce determination ignites,
a soul aflame, ready to conquer daunting heights.





MILLIONAIRES' ROW,
A REALM
CRAFTED FOR
MODERN
ARISTOCRATS.

With indomitable spirit, you have soared like
a phoenix and fearlessly carved your own path
in life. You have endured trials, stood resolute,
and emerged triumphant – along the way crafting
a legacy that will be celebrated forever.



With a blazing fire in your eyes,
akin to the resplendent dawn skies.
Discover an oasis crafted with elegance,
your rightful decadence.

Behold your majestic abode,
bathed in celestial glow.
Where aspirations take flight,
of the elite and the highbrow.





Artist's Impression

A TESTAMENT TO YOUR ODYSSEY.

Discover exquisite residences that exude magnificence and sophistication. Inspired by the iconic Crystal Palace in London, SOBHA Crystal Meadows is designed with a distinctive glass and metal structure that creates a breathtaking spectacle and casts a mesmerising glow. Live the rarefied life at Millionaires' Row – the city's most coveted address.

Your Victorian marvel is a sight to behold.
A haven for those who dream, dare, and succeed.
A community of super-achievers that celebrates
the seniors and inspires the little ones to reach
for the stars. A highly secure gated campus,
SOBHA Crystal Meadows grants you complete
peace of mind as you step out to conquer
unexplored vistas.





Artist's Impression

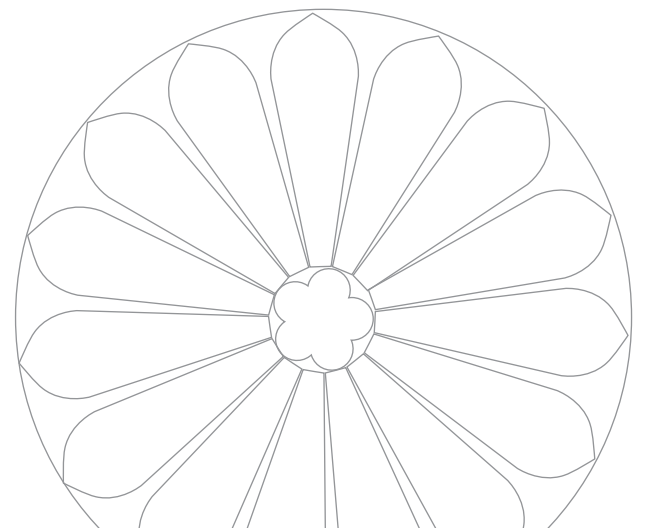
The intricately detailed and masterfully crafted stone cladding runs across the entire facade – creating a breathtaking, imposing presence. The seamless expanse of floor-to-ceiling glass windows allows natural light to cascade into the house, enveloping it in an ethereal ambience.

Sunlight dances through the gracefully curved Georgian bars, radiating the splendour and luxury of timeless Victorian architecture. Embellished with delicate geometric patterns and ornate floral motifs, the Rose Window infuses your home with an aura of mystique.



Artist's Impression

YOUR PALACE
OF ELEGANCE.



Lushness adorns the landscape far and wide,
in this enclave where grand dreams reside.
Towering walls beckon; a canvas of space,
whispers of luxury, in every embrace.



Artist's Impression

DOUBLE-HEIGHT LIVING & DINING AREA

CREATED FOR YOU.

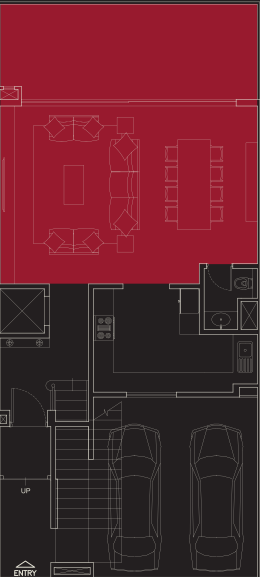
Discover a towering quadruplex of opulence – designed with vast terrace, private garden, 2 parking slots, and more. Take the plush elevator to reach your private terrace and any of the grand living spaces. Your residence is meticulously designed to meet your lifestyle needs – hosting in style, spending quality time with family, and rejuvenating in private sanctuaries of peace.



GLAMOROUS GATHERINGS.

Elevate your joy of hosting with these opulent, expansive spaces. The double-height living and dining area sets the stage for bringing together near and dear ones over delectable feasts. Spread over 240 sq ft, the secluded garden is an extension of this area, where your esteemed guests can unwind and be one with nature.

Ground Floor



Type B5 West - 4236 sq ft



Artist's Impression

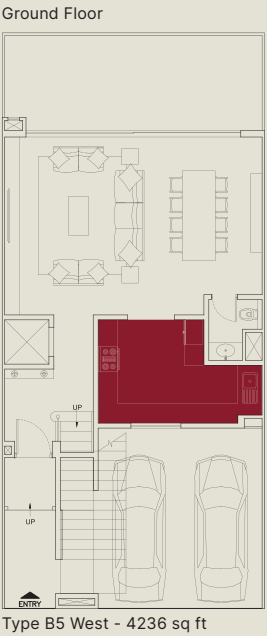
DOUBLE-HEIGHT LIVING & DINING AREA



KITCHEN WITH UTILITY

Artist's Impression

The well-designed kitchen and the concealed utility are thoughtfully aligned with the living & dining area, enabling seamless interaction with friends and family. From al fresco brunches to elegant soirées, these intimate gatherings will be eagerly anticipated at an enviable venue – your grand residence.



CHERISHED MEMORIES.

Step into a world where every moment is a treasure waiting to be discovered. From carefree laughter echoing through the family room to deep conversations in the den, unforgettable memories with your loved ones will be formed in these warm, inviting spaces.



Step out of the elevator onto the expansive terrace that spans over 500 sq ft. Grow organic greens or fragrant flowers with the little ones, commit to daily yoga with your partner, meditate solo under the open skies, install a hammock or a swing – the list of delightful to-dos is as endless as the terrace itself.

Whether you are unwinding after an eventful day, enjoying an exclusive private screening, or sharing heartfelt stories, your home is meticulously designed to foster meaningful connections.



Type B5 West - 4236 sq ft



Concept Image

TERRACE

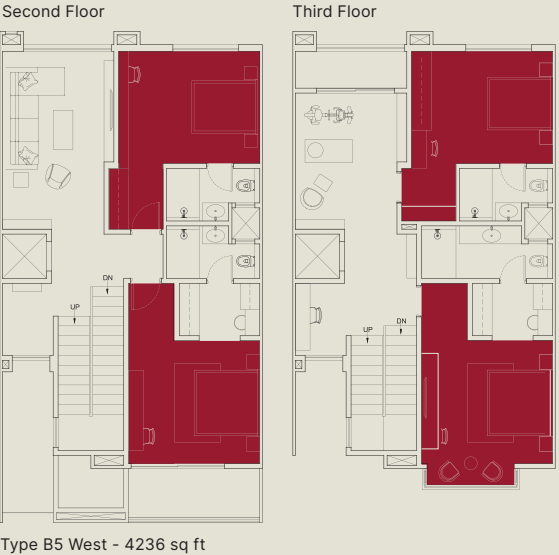


MASTER BEDROOM

Artist's Impression

UNPARALLELED PRIVACY.

Your quadruplex is consciously designed to enable multigenerational living, with the uppermost floors dedicated to spacious, well-crafted bedrooms. Be it teenagers who need their space or parents who prefer a quiet retreat, there's a private sanctuary for everyone.

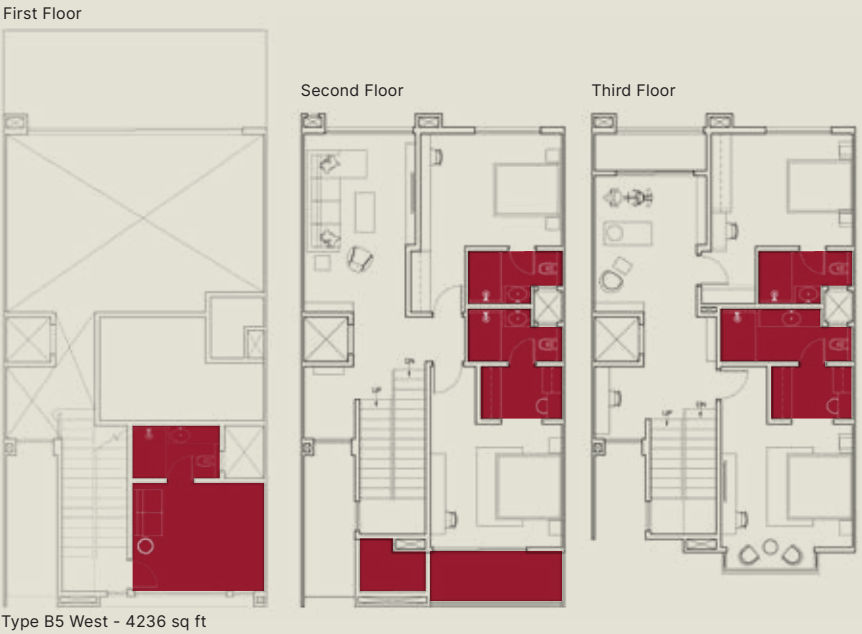




BATHROOM (Bathtub provided in Regal residences only)

Artist's Impression

These include two master bedrooms (with dress areas) on separate floors, secluded DH room, dedicated work-from-home area, bedroom with attached terrace and planter box, and more. Pamper yourself in the well-engineered bathrooms that feature world-class, stylish fixtures. Now here's a serene haven that befits your stature.





DOUBLE-HEIGHT LIVING & DINING AREA

Artist's Impression

INDULGENCES
CURATED
**FOR KINDRED
SOULS.**



Luxuriate in amenities crafted for the community
in a world rarefied, inhabited by nobility.
A fellowship of minds, harmonious and rare,
you share the same vision, the same noble flair.



AMENITIES THAT CONNECT YOU WITH LIKE-MINDED PEERS.

Discover a host of conveniences – selectively picked so you can lead a fulfilling life. Pursue diverse interests, hobbies, and recreations with amenities that are curated for all age groups.

These indulgences are thematically classified into four categories – Symphony of Serenity, Convergence of Elites, Journey of Strength, and Club Imperium.



SYMPHONY OF SERENITY

In the lap of nature! Explore parks, lagoons, gardens, and more under the vast expanse of the azure sky.



JOURNEY OF STRENGTH

Practise your favourite games and sports – solo or in a group – be it weekday, weekend, morning, or night.



CONVERGENCE OF ELITES

Meet like-minded residents against the grand backdrop of carefully chosen recreational amenities.



CLUB IMPERIUM

From squash to swimming, follow your fitness regime at these indoor amenities.



SENSORY FOREST

Concept Image

SYMPHONY OF SERENITY.

Discover a haven for adventurers yearning to break free from the monotony of everyday life. At the Sensory Forest, lose yourself in a realm where your senses are heightened beyond imagination. Explore the wilderness and bask in the warm glow of the bonfire at the Camping Ground. Or just sit by the glistening waters of the Crystal Lagoon, and let your heart swell with an overwhelming sense of peace.

- Estuary Park • Crystal Lagoon • Sensory Forest • Camping Ground
- Healing Garden • Walkabout Gardens • Fountain Court • Exhibition Cove • Pet Park

CONVERGENCE OF ELITES.

Connect with the who's who amidst a magnificent setting, or host unforgettable gatherings brimming with splendour – these amenities are crafted for grandeur and festivities. Whether you are orchestrating a lavish extravaganza, a memorable get-together, or a heartwarming family reunion, venues such as Celebration Lawn and Picnic Grove are the perfect backdrop for the upper echelons.

- Celebration Lawn • Community Nook
- Picnic Grove • Multipurpose Field

MULTIPURPOSE FIELD



Concept Image



TENNIS COURT

Concept Image

JOURNEY OF STRENGTH.

A world of athletic possibilities awaits you and the little ones. Dive into a sport of your choice and showcase your skills as you challenge your neighbours. Whether you are a basketball aficionado, a volleyball virtuoso, a swimming champion, or a tennis titan, here's the ideal stage to push your limits. What's more, the uniquely designed Kids' Play Area ignites their imagination, fuels their creativity, and enhances their social skills.

- Multisport Courts • 125m Full Lap Running Track • Tennis Court • Basketball Court • Meditation Lawn
- Outdoor Fitness Deck • Jogging & Cycling Trail • Kids' Play Area • 50m Leisure Pool & Kids' Pool (Club Imperium)





KIDS' POOL

Concept Image

CLUB IMPERIUM

The joy of following your passion. The calm fury as you learn self-defence. The adrenaline high as a stirring match culminates. The active amenities at Club Imperium are meant for winners who peak not just mentally but also physically – every day.

- Badminton Courts • Squash Court • Table Tennis / Foosball Arena
- Martial Arts Training Centre • Juice Bar • 50m Leisure Pool • Kids' Pool

A MASTERFULLY
DESIGNED
COMMUNITY.



- 1 Crystal Lagoon
- 2 Estuary Park
- 3 Pet Park
- 4 Walkabout Gardens
- 5 Fountain Court
- 6 Healing Garden
- 7 Sensory Forest
- 8 Exhibition Cove
- 9 Camping Ground



- 1 Multipurpose Field
- 2 Celebration Lawn
- 3 Picnic Grove
- 4 Community Nook



- 1 Multisport Courts
- 2 125m Full Lap Running Track
- 3 Basketball Court
- 4 Tennis Court
- 5 Outdoor Fitness Deck
- 6 Meditation Lawn
- 7 Kids' Play Area
- 8 Jogging & Cycling Trail



- Badminton Courts
- Squash Court
- Table Tennis / Foosball Arena
- Martial Arts Training Centre
- Juice Bar
- 50m Leisure Pool
- Kids' Pool

- + Sewage Treatment Plant
- ◆ Water Treatment Plant
- ◆ Rainwater Harvesting
- * Diesel Generator Yard
- Transformer Yard



A BIRD'S EYE VIEW.

- Two majestic entrances with grand archways and cobbled streets
- Over 68% open spaces, for exclusivity and serenity
- Green walkways that enable pedestrians to traverse 90% of the enclave without encountering vehicles
- Amenities thoughtfully curated for all age groups, and for individual & group pursuits
- Amenities and clubhouse located away from homes, creating a tranquil ambience
- Visitors' parking near every street, ensuring easy access for guests

AREA SPECIFICATIONS

Unit Type	SBA (sq ft)
4BHK Supreme	4237-4287
4BHK Regal	4803-4815

KEY FEATURES

Total land area	: 26 acres 27 guntas
No. of residences	: 290
No. of floors	: G + 3 levels + terrace

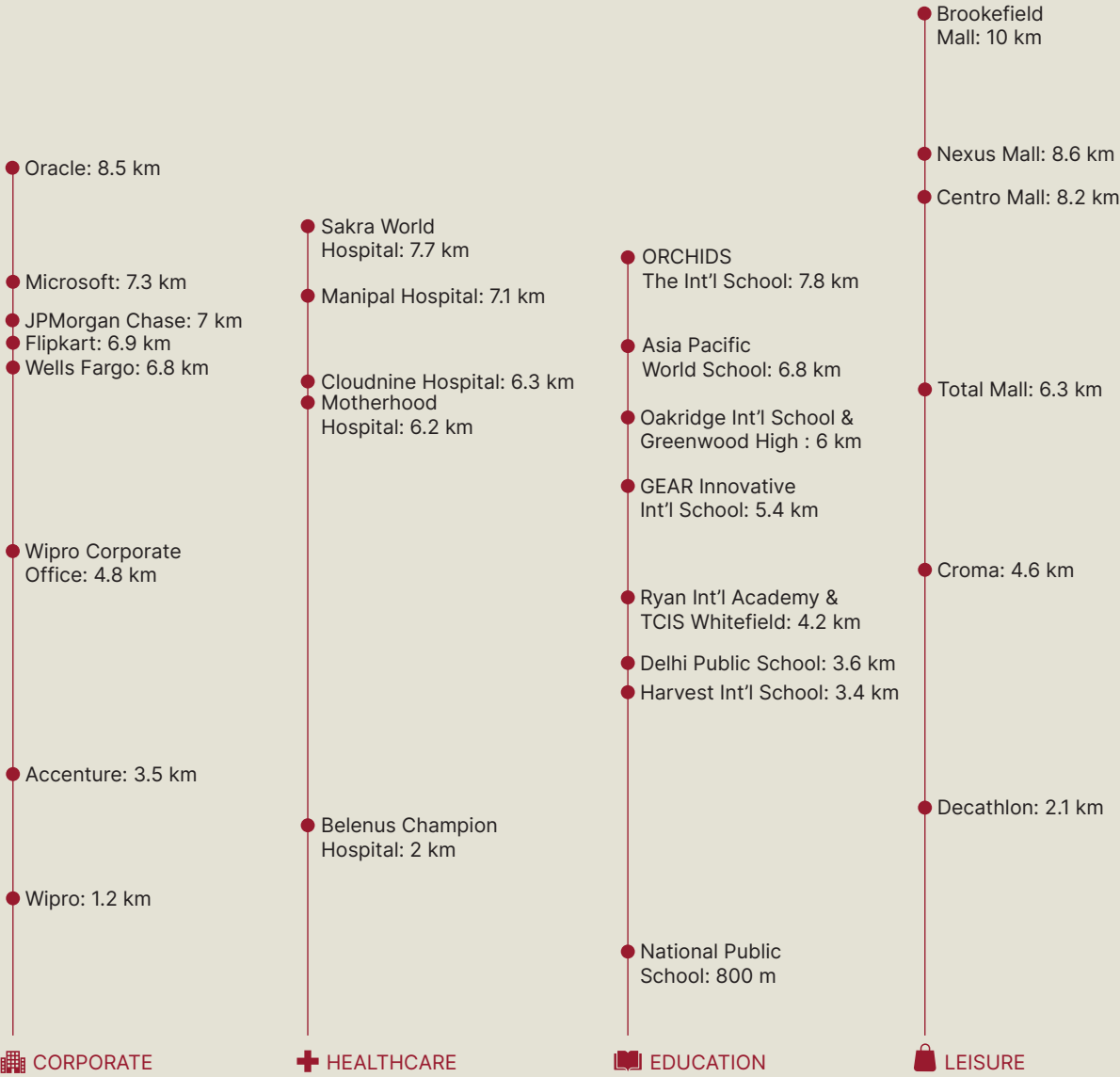


SARJAPUR ROAD THE UBER SUBURBIA.

Located right in the middle of East and South Bengaluru, Sarjapur Road is the hub of everything you'll ever need. The city's key business districts and largest IT & startup hubs – Electronic City, HSR Layout, Outer Ring Road, Whitefield – are a few minutes away. Strategic location, unrivalled connectivity, and remarkable development make this locale a highly desirable destination for discerning homebuyers.

THE NEIGHBOURHOOD THAT MILLIONAIRES DESERVE.

Sarjapur Road and the areas nearby are home to reputable educational & healthcare institutions, key business districts, and avenues for shopping, dining, & entertainment. Everything you need to lead a fulfilling life is conveniently located in the vicinity.



ESTD. 1995



- 539 Projects Spread Over 133 Million sq ft • 27 Cities in 14 States
- 1456 Quality Checks • Over 230 Prestigious Awards

PASSION. INKED WITH PERFECTION. SINCE 1995

From opulent palaces for royalty to grand campuses for corporate giants, SOBHA has a storied legacy of crafting iconic residential and commercial projects. Harvard Business School has developed a case study on SOBHA's pioneering backward integration model.

Spread over 6,00,000 sq ft, the company's world-class manufacturing verticals include Concrete Products Division, Interiors Division, Glazing & Metal Works Division, and Precast Facility. These enable SOBHA to provide unmatched quality and on-time delivery to its distinguished customers. Having transformed the skylines of urban India, SOBHA is the most preferred real estate brand in the country.

shot
at
site



INFOSYS GLOBAL EDUCATION CENTRE, MYSURU